



传递梦想 共享未来

Transfer Our Dream Share Our Future

SINGI[®]
信基线缆



PRODUCTS OVERVIEW

SINGI[®] 上海信基线缆有限公司
SHANG HAI SINGI WIRE & CABLE CO.,LTD.

地址：上海市奉贤区庄行镇欧洲工业园区航南公路7833号

Add: No.7833, Hangnan Road, European Industrial Zone,

Zhuanghang, Fengxian District, Shanghai

电话(Tel): 021-37400222 传真(Fax): 021-37400005

网址(Http): www.singicable.com

客户热线 Customer Hotline:
400-820-5961



上海信基线缆有限公司
SHANG HAI SINGI WIRE & CABLE CO.,LTD.

SINGI® 信基线缆
电线电缆制造专家



信基线缆 卷卷有芯意·根根通天下

公司秉承“合作共赢、创新发展”的精神，不断开拓进取，在传承中创新，在发展中提升，不断超越、并将与大家共创美好未来。



路线图:



关于信基 ABOUT US

中国·信基集团（筹）下辖：上海信基线缆有限公司、上海信基电气有限公司、浙江信基电气股份有限公司。SINGI、信基、信基伟业系注册商标。

上海信基线缆有限公司隶属于中国·信基集团，坐落在国际大都市上海市奉贤区庄行镇欧洲工业园区，是高科技民营股份制公司。公司占地面积20000平方米，建筑面积14000平方米，专业致力于电线电缆的研发、生产和销售，是国内最专业的弱电缆及特种电缆的生产企业之一，拥有多条世界先进的自动化电缆生产线和当今一流的试验、检验设备，以及电缆安全检测、应用的大型实验室。

公司聘请了国内资深的电缆技术专家组成企业的技术团队，高起点，严要求的控制质量，确保产品符合并超越行业及国家标准；公司以上海为中心，在全国大、中型城市建立完善的营销网络和售后服务体系并出口美洲、欧洲、中东、东南亚、非洲等几十个国家和地区；与多家一流的全球性电子企业结成战略合作伙伴。公司现有生产员工300余人，各种管理及技术人员50多名，公司实施“以人为本”的管理理念。任人为贤，为各类人才提供了广阔的发展空间，在提高企业员工自身素质的同时不断增强企业的综合竞争力。

公司主要产品有：超五类、六类、超六类网络数据电缆、安防布线系列电缆、各类音视频电缆、同轴电缆、电梯电缆、组合数据电缆、计算机网络电缆、及光伏电缆、UL电缆、柔性电缆、工业自动化与控制电缆、拖链电缆、机器人电缆等特种电缆，产品近十个大类，上千种规格。信基产品均全面通过国家级专业机构的检验和测试，通过了并拥有国家安全强制性认证（3C认证）、美国UL认证以及欧洲的CE认证、ISO9001：2000质量体系认证等证书，荣获重合同守信用企业、计量合格企业、中国著名品牌、中国电线100强等荣誉称号。

每天都是新的开始，信基人为创国际品牌而不懈努力。

China SINGI Group includes Shanghai Singi Wire & Cable Co.,LTD., Shanghai Singi Electric Co.,LTD. Zhengjiang Singi Electric Co.,LTD.

Shanghai Singi Wire & Cable Co.,LTD, belongs to China SINGI Group, locates at European Zone, Zhuanghang, Fengxian district,Shanghai,as the hi-tech private stocking company. The company area is 20,000 sq.m, building area about 14,000 sq.m, specialized in the development, production and sale of wire and cable, is one of the most professional cable and specialty cable manufacturing enterprises, with the world's advanced automation cable production lines and present first-class testing, inspection equipments, and cable safety testing, large-scale laboratory applications.The company hired domestic senior technical cables experts, high aim, strict quality control requirements to ensure that products meet and exceed industry and national standards; The company based on Shanghai ,has set up the complete marketing network and after-sales system. and export to dozens of countries in the Americas, Europe, the Middle East, Southeast Asia, Africa and so on; and a lot of leading global electronics companies formed a strategic partnership.

Company' have more than 300 production staff,50 management and technical staff, the company insists on the management concept of "Human being is root", never neglect the telnets, provide them the wide development space, meanwhile we continued strengthen the comprehensive competition of enterprise.

The company main products have CAT5E,CAT6,CAT6A,RVV Cable for electrical installation, Audio Cable, Coaxial cable, Elevator Cable, Computer Cable, Solar Cable, UL Cable, Flexible Cable, Industrial automatic moved and Control Cable, Chain Cable and Robotic cable. SINGI products have CCC certification, American UL certification, European CE certification,ISO9001:2000 quality system attestation, awarded the contract and keep promise enterprise, measurement qualified enterprise, China famous brand, China top 100 wire, etc

Every day is a new start, Singi people try hard to set up an international brand.

CONTENTS

产品目录 Contents



▶ 通信电缆 Communication Cable

超五类网线 CAT5E Cable

超五类非屏蔽网线 UTP CAT5E CABLE	01
超五类单屏蔽网线 FTP CAT5E CABLE	02
超五类双屏蔽网线 SFTP CAT5E CABLE	03

六类网线 CAT6 CABLE

六类非屏蔽网线 UTP CAT6 CABLE	04
六类单屏蔽网线 FTP CAT6 CABLE	05
六类双屏蔽网线 SFTP CAT6 CABLE	06

超六类网线 CAT6A CABLE

超六类非屏蔽网线 UTP CAT6A CABLE	07
--------------------------	----

室外网线 Outdoor LAN Cable

单层护套室外防水网线 Single Jacket Water proofing LAN cable	08
双层护套室外防水网线 Double Jacket Water proofing LAN cable	09/10

▶ 安防电缆 Security Cable Electrical Cable

RVV系列电缆 RVV cable

AVVR型 铜导体聚氯乙烯绝缘聚氯乙烯护套安装用软电缆 AVVR Copper conductor PVC sheathed flexible cable for installation	11
RVV型 铜导体聚氯乙烯绝缘聚氯乙烯护套软电缆 RVV Copper conductor PVC sheathed flexible cable	12
RVVS型 铜导体聚氯乙烯绝缘聚氯乙烯护套带双绞软电缆 RVVS Copper conductor PVC sheathed twisted flexible cable	13
RVVB型 铜导体聚氯乙烯绝缘聚氯乙烯护套扁形软电缆 RVVB Copper conductor PVC sheathed flat flexible cable	14
RV型 铜导体聚氯乙烯绝缘软电缆 RV Copper conductor PVC insulated flexible cable	15
RVS型 铜导体聚氯乙烯绝缘带双绞软电缆 RVS Copper conductor PVC insulated twisted flexible cable	16
RVB型 铜导体聚氯乙烯绝缘扁形软电缆 RVB Copper conductor PVC Insulated flat flexible cable	17

RVVP系列屏蔽电缆 RVVP Shielded cable

RVVP型 铜导体聚氯乙烯绝缘聚氯乙烯护套屏蔽软电缆 RVVP Copper conductor PVC shielded flexible cable	18
RVVSP型 铜导体聚氯乙烯绝缘聚氯乙烯护套带双绞屏蔽软电缆 RVVSP Copper conductor PVC sheathed twisted shielded flexible cable	19

音响电缆 Audio Cable

铜导体聚氯乙烯绝缘扁形音响设备专用软电缆 Copper Conductor PVC insulated Flat Flexible Audio Cable	21
---	----

同轴电缆 Coaxial Cable

SYWV-75型 屏蔽物理发泡同轴电缆 SYWV-75 Shielded Foam PE Coaxial Cable	22
SYV-75型 屏蔽实心聚乙烯同轴电缆 SYV-75 Shielded PE Coaxial Cable	23
RG系列 射频同轴电缆 RG Cable Coaxial Cable	24

▶ 特种电缆 Special Cable

机械配套电缆 Machinery and equipment cable

柔性非屏蔽电气安装用软电缆 Ultra flexible electrical installation with flexible cable	25
柔性带屏蔽电气安装用软电缆 Ultra flexible electrical installation with cables and shielded flexible cable	26
柔性耐油非屏蔽电缆 Flexible oil resistant unshielded cable	27
柔性耐油带屏蔽电缆 Flexible oil resistant shielded cable	28
变频器专用电缆 CU-screened, EMC Preferred	29
伺服电缆 Motor-supply Control Cable (shielded)	30
电机连接动力电缆 Motor connection power cables	31
QVR汽车线 Low Voltage Wire of Automotive Used	32

机器人电缆 Robot cable

柔性非屏蔽机器人专用电缆 Ultra flexible robot cable	33
柔性带屏蔽机器人专用电缆 Ultra flexible overall copper screen robot cable	34

拖链电缆 Special cable for Drag chains

耐弯曲非屏蔽柔性拖链电缆 Special flexible cable for Drag chains(without shield)	35
耐弯曲单护套屏蔽拖链电缆 Special cable for Drag chains(shield)	36
耐弯曲双护套屏蔽拖链电缆 Special cable for Drag chains(shield)	37
耐弯曲聚氨酯护套非屏蔽拖链电缆 Resistance to bend PUR drag chain cable	38
耐弯曲聚氨酯护套带屏蔽拖链电缆 Resistance to bend PUR sheath shielding drag chain cable	39

随行控制电缆 Accompanying Control Cable

电梯随行控制电缆 Flat Traveling Cable for Elevator	41
扁平控制软电缆 Flat Control Flexible cable	42
行车起重电缆 Flat Cable for Cranes and Conveyors	43
自承式钢索电缆 Round Cable with Supporting Steel Wires	44

▶ 中低压电缆 Low-voltage cable

控制电缆 Control Cable

KVV型 铜导体聚氯乙烯绝缘聚氯乙烯护套控制电缆 KVV Copper conductor PVC sheathed Control Cable	45
KVVR型 铜导体聚氯乙烯绝缘聚氯乙烯护套控制软电缆 KVVR Copper conductor PVC sheathed Flexible Control Cable	46
KVVVP型 铜导体聚氯乙烯绝缘聚氯乙烯护套带屏蔽控制电缆 KVVVP Copper conductor PVC sheathed Control Cable	47
KVVVRP型 铜导体聚氯乙烯绝缘聚氯乙烯护套带屏蔽控制软电缆 KVVVRP Copper conductor PVC sheathed shielded Control Cable	48

计算机线缆 Computer Cable

DJYVP型 铜导体聚乙烯绝缘聚氯乙烯护套铜丝编织分屏蔽计算机电缆 DJYVP Copper core pair shielded computer cable	49
DJYVP型 铜导体聚乙烯绝缘聚氯乙烯护套铜丝编织总屏蔽计算机电缆 DJYVP Copper Core overall shielded computer cable	50
DJYVPV型 铜导体聚乙烯绝缘聚氯乙烯护套铜丝编织分屏蔽总屏蔽计算机电缆 DJYVPV Copper Core shielded and overall shielded computer cable	51

电力电缆 Power Cable

VV型 铜导体聚氯乙烯绝缘聚氯乙烯护套电力电缆 VV Copper conductor PVC insulated PVC sheathed Power cable	53
YJV型 铜导体聚乙烯绝缘聚氯乙烯护套电力电缆 YJV Copper conductor XLPE insulated PVC sheathed Power cable	54

BV系列电缆 BV Cable

BV型 铜导体聚氯乙烯绝缘硬电缆 BV Copper conductor PVC Insulated Hard Cable	55
BVR型 铜导体聚氯乙烯绝缘软电缆 BVR Copper conductor PVC Insulated Flexible Cable	56
BVV型 铜导体聚氯乙烯绝缘聚氯乙烯护套圆形电缆 BVV Copper conductor PVC Insulated PVC Jacket Round Cable	57
BVVVB型 铜导体聚氯乙烯绝缘聚氯乙烯护套扁形电缆 BVVB Copper conductor PVC Insulated PVC Jacket flat Cable	58

光伏电缆 Solar Cable

TUV型 单芯光伏线缆 TUV Single Core Solar Cable Series	60
TUV型 两芯光伏线缆 Photo voltaic Power Cable, TUV Two core PV cable	61

UL标准电缆 UL standard Cable

1007 UL标准电气安装用电缆 UL 1007 electrical installation with flexible cable	62
1015 UL标准电气安装用电缆 UL 1015 electrical installation with flexible cable	63
2464 UL标准非屏蔽电缆 UL 2464 no shielded cable	64
2464 UL标准带屏蔽电缆 UL 2464 shielded cable	65
2464 UL标准带双绞屏蔽电缆 UL 2464 twisted shielded cable	66



SINGI Wire&cable

【通信电缆】



www.singicable.com

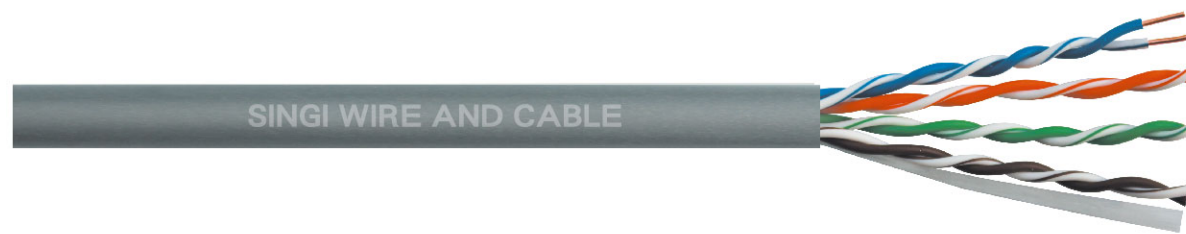


SINGI

Communication Cable Series

信基通信电缆系列 →





应用范围:

CAT5E类线缆适用于室内水平工作区域网络及其布线系统。在90米距离内提供100MHz带宽,应用速率为100Mbps。铜导体分单股铜和多股绞合铜两种,护套可采用聚氯乙烯(PVC)、低烟无卤(LSZH)材料等,供客户根据线缆使用的环境灵活选择。

Application:

Cat5e is suitable for critical LAN applications or Structured Cabling Systems, provide 100MHz broadband within 90M distance, the application rate is 100Mbps. You can choose Solid Copper or Stranded Copper, Jacket has PVC or LSZH, you can choose easily according to your need.

产品结构:

导体直径: 24号线规单股铜或多股绞合无氧铜丝
绝缘材料: HDPE高密度聚乙烯
绝缘标识: 橙、白/橙、蓝、白/蓝、绿、白/绿、棕、白/棕
撕裂线: 尼龙绳
护套材料: 聚氯乙烯(PVC)、低烟无卤(LSZH)
护套外径: 5.2+/-0.2mm

Product structure:

Conductor Diameter: 24AWG Solid or Stranded oxygen-free Copper Wire
Insulation Material: HDPE
Insulation color: Orange, White/Orange, Blue, White/Blue, Green, White/Green, Brown, White/Brown
Ripcord: Nylon rope
Jacket Material: PVC, LSZH
Jacket Diameter: 5.2+/-0.2mm

技术参数:

执行标准: YD/T1019、ISO/IEC 11801、TIA/EIA 568C
额定温度: 70°C

Technical Parameters:

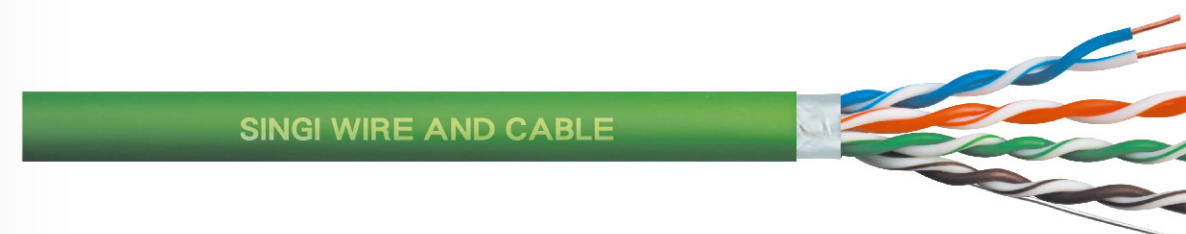
Implementation of standards :
YD/T1019、ISO/IEC 11801、TIA/EIA 568C
Rated Temperature : 70°C

型号规格: Specification:

物料编号 SINGI NO:	名称规格 Style specification	包装长度 Package: Meter	包装方式 Package ways	包装数量 Package quantity
SG-3004	室内超五类4对非屏蔽网线 4Pairs UTP CAT5E Indoor Cable	305米/305M	易拉箱 Easy Pull Box	3箱1大箱 3boxes/carton
SG-3003	室内超五类4对非屏蔽网线 4Pairs UTP CAT5E Indoor Cable	100米/100M	易拉箱 Easy Pull Box	6箱1大箱 6boxes/carton

注明: 多股导体网线需定制, 包装长度及护套颜色均可依客户要求定制。具体参数以产品规格书为准。

Note: Stranded copper cable can be customized; Package and Cable Color can be customized according to the customer requirements. Detailed parameter please checks the specification.



应用范围:

CAT5E类线缆适用于室内水平工作区域网络及其布线系统。在90米距离内提供100MHz带宽,应用速率为100Mbps。线对外整体纵包单面铝箔,在保证同等传输带宽水平前提下,抗干扰能力提高了很多,可用于需抗电磁干扰的使用环境。铜导体分单股铜和多股绞合铜两种,护套可采用聚氯乙烯(PVC)、低烟无卤(LSZH)材料等,供客户根据线缆使用的环境灵活选择。

Application:

Cat5e is suitable for critical LAN applications or Structured Cabling Systems, provide 100MHz broadband within 90M distance, the application rate is 100Mbps. Compared with UTP cat5e cable, increase Aluminum Foil, increase Noise immunity when the signal transmission, also can be used for anti-electromagnetic interference environment, have signal shielding and confidentiality. You can choose Solid Copper or Stranded Copper, Jacket has PVC or LSZH, you can choose easily according to your need.

产品结构:

导体直径: 24号线规单股铜或多股绞合无氧铜丝
绝缘材料: HDPE高密度聚乙烯
绝缘标识: 橙、白/橙、蓝、白/蓝、绿、白/绿、棕、白/棕
屏蔽层: 聚脂带+单面铝箔
排流线: 单支或多股绞合铜
撕裂线: 尼龙绳
护套材料: 聚氯乙烯(PVC)、低烟无卤(LSZH)
护套外径: 5.8+/-0.2mm

Product structure:

Conductor Diameter: 24AWG Solid or Stranded oxygen-free Copper Wire
Insulation Material: HDPE
Insulation color: Orange, White/Orange, Blue, White/Blue, Green, White/Green, Brown, White/Brown
Shield: Polyester tape + Aluminum Foil
Drain Wire: Solid or Stranded Copper
Ripcord: Nylon rope
Jacket Material: PVC, LSZH
Jacket Diameter: 5.8+/-0.2mm

技术参数:

执行标准: YD/T1019、ISO/IEC 11801、TIA/EIA 568C
额定温度: 70°C

Technical Parameters:

Implementation of standards :
YD/T1019、ISO/IEC 11801、TIA/EIA 568C
Rated Temperature : 70°C

型号规格: Specification:

物料编号 SINGI NO:	名称规格 Style specification	包装长度 Package: Meter	包装方式 Package ways	包装数量 Package quantity
SG-3005	室内超五类4对单屏蔽网线 4Pairs FTP CAT5E Indoor Cable	305米/305M	易拉箱 Easy Pull Box	2箱1大箱 2boxes/carton

注明: 多股导体网线需定制, 包装长度及护套颜色均可依客户要求定制。具体参数以产品规格书为准。

Note: Stranded copper cable can be customized; Package and Cable Color can be customized according to the customer requirements. Detailed parameter please checks the specification.

超五类4对双屏蔽网络线 S/FTP型
CAT5E S/FTP 4Pairs TWISTED PAIR LAN CABLE

SINGI WIRE AND CABLE



应用范围:

CAT5E类线缆适用于室内水平工作区域网络及其布线系统。在90米距离内提供100MHz带宽，应用速率为100Mbps。线对外整体纵包单面铝箔后再加铜丝编织网屏蔽，在保证同等传输带宽水平前提下，抗干扰能力提高了很多，适用于需抗电磁干扰和保密性的使用环境。铜导体分单股铜和多股绞合铜两种，护套可采用聚氯乙烯(PVC)、低烟无卤(LSZH)材料等，供客户根据线缆使用的环境灵活选择。

Application:

Cat5e is suitable for critical LAN applications or Structured Cabling Systems provide 100MHz broadband within 90M distance, the application rate is 100Mbps. Compared with UTP cat5e cable, S/FTP CAT5E increase Aluminum Foil and Braid shield, increase Noise immunity when the signal transmission, also can be used for anti-electromagnetic interference environment, have signal shielding and confidentiality. You can choose Solid Copper or Stranded Copper, Jacket has PVC or LSZH, you can choose easily according to your need.

产品结构:

导体直径：24号线规单股铜或多股绞合无氧铜丝
绝缘材料：HDPE高密度聚乙烯
绝缘标识：橙、白/橙、蓝、白/蓝、绿、白/绿、棕、白/棕
屏蔽层：聚脂带+单面铝箔
排流线：单支或多股绞合铜
屏蔽网：无氧铜丝或镀锡铜丝编织
撕裂线：尼龙绳
护套材料：聚氯乙烯(PVC)、低烟无卤(LSZH)
护套外径：6.4+/-0.2mm

Product structure:

Conductor Diameter: 24AWG Solid or Stranded oxygen-free Copper Wire
Insulation Material: HDPE
Insulation color: Orange, White/Orange, Blue, White/Blue, Green, White/Green, Brown, White/Brown
Shield: Polyester tape + Aluminum Foil
Drain Wire: Solid or Stranded Copper
Braid Shield: Bare copper or Tinned copper shield
Ripcord: Nylon rope
Jacket Material: PVC, LSZH
Jacket Diameter: 6.4+/-0.2mm

技术参数:

执行标准：YD/T1019、ISO/IEC 11801、TIA/EIA 568C
额定温度：70°C

Technical Parameters:

Implementation of standards :
YD/T1019、ISO/IEC 11801、TIA/EIA 568C
Rated Temperature : 70°C

型号规格: Specification:

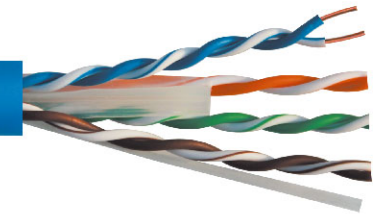
物料编号 SINGI NO:	名称规格 Style specification	包装长度 Package: Meter	包装方式 Package ways	包装数量 Package quantity
SG-3006	室内超五类4对双屏蔽网线 4Pairs S/FTP CAT5E Indoor Cable	305米/305M	易拉箱 Easy Pull Box	2箱1大箱 2 boxes/carton

注明：多股导体网线需定制，包装长度及护套颜色均可依客户要求定制。具体参数以产品规格书为准。

Note: Stranded copper cable can be customized; Package and Cable Color can be customized according to the customer requirements. Detailed parameter please checks the specification.

六类4对非屏蔽网络线 UTP型
CAT6 UTP 4Pairs TWISTED PAIR LAN CABLE

SINGI WIRE AND CABLE



应用范围:

CAT6类线缆适用于室内水平工作区域网络及其布线系统。在90米距离内提供250MHz带宽，应用速率为1000Mbps。采用了23号线规铜导体，中心十字骨架分离4个单独线对设计，保证传输性能稳定可靠。铜导体分单股铜和多股绞合铜两种，护套可采用聚氯乙烯(PVC)、低烟无卤(LSZH)材料等，供客户根据线缆使用的环境灵活选择。

Application:

CAT6 is suitable for mission critical LAN applications or Structured Cabling Systems, provide 250MHz broadband within 90M distance, the application rate is 1000Mbps. You can choose Solid Copper or Stranded Copper, Jacket has PVC or LSZH, you can choose easily according to your need.

产品结构:

导体直径：23号线规单股铜或多股绞合无氧铜丝
绝缘材料：HDPE高密度聚乙烯
绝缘标识：橙、白/橙、蓝、白/蓝、绿、白/绿、棕、白/棕
中心骨架：透明PE十字型
撕裂线：尼龙绳
护套材料：聚氯乙烯(PVC)、低烟无卤(LSZH)
护套外径：6.3+/-0.2mm

Product structure:

Conductor Diameter: 23AWG Solid or Stranded oxygen-free Copper Wire
Insulation Material: HDPE
Insulation color: Orange, White/Orange, Blue, White/Blue, Green, White/Green, Brown, White/Brown
Cross: transparent HDPE
Ripcord: Nylon rope
Jacket Material: PVC, LSZH
Jacket Diameter: 6.3+/-0.2mm

技术参数:

执行标准：YD/T1019、ISO/IEC 11801、TIA/EIA 568C
额定温度：70°C

Technical Parameters:

Implementation of standards :
YD/T1019、ISO/IEC 11801、TIA/EIA 568C
Rated Temperature : 70°C

型号规格: Specification:

物料编号 SINGI NO:	名称规格 Style specification	包装长度 Package: Meter	包装方式 Package ways	包装数量 Package quantity
SG-3007	室内六类4对非屏蔽网线 4Pairs UTP CAT6 Indoor Cable	305米/305M	易拉箱 Easy Pull Box	2箱1大箱 2 boxes/carton

注明：多股导体网线需定制，包装长度及护套颜色均可依客户要求定制。具体参数以产品规格书为准。

Note: Stranded copper cable can be customized; Package and Cable Color can be customized according to the customer requirements. Detailed parameter please checks the specification.

六类4对单屏蔽网络线 FTP型
CAT6 FTP 4Pairs TWISTED PAIR LAN CABLE



应用范围:

CAT6类线缆适用于室内水平工作区域网络及其布线系统。在90米距离内提供250MHz带宽,应用速率为1000Mbps。采用了23号线规铜导体,中心十字骨架分离4个单独线对设计,保证传输性能稳定可靠。线对外整体纵包单面铝箔,在保证同等传输带宽水平前提下,抗干扰能力提高了很多,可用于需抗电磁干扰的使用环境。铜导体分单股铜和多股绞合铜两种,护套可采用聚氯乙烯(PVC)、低烟无卤(LSZH)材料等,供客户根据线缆使用的环境灵活选择。

产品结构:

导体直径: 23号线规单股铜或多股绞合无氧铜丝
绝缘材料: HDPE高密度聚乙烯
绝缘标识: 橙、白/橙、蓝、白/蓝、绿、白/绿、棕、白/棕
中心骨架: 透明PE十字型
屏蔽层: 聚脂带+单面铝箔
排流线: 单支或多股绞合铜
撕裂线: 尼龙绳
护套材料: 聚氯乙烯(PVC)、低烟无卤(LSZH)
护套外径: 6.8+/-0.2mm

技术参数:

执行标准: YD/T1019、ISO/IEC 11801、TIA/EIA 568C
额定温度: 70°C

型号规格: Specification:

物料编号 SINGI NO:	名称规格 Style specification	包装长度 Package: Meter	包装方式 Package ways	包装数量 Package quantity
SG-3008	室内六类4对单屏蔽网线 4Pairs FTP CAT6 Indoor Cable	305米/305M	易拉箱 Easy Pull Box	2箱1大箱 2boxes/carton

注明: 多股导体网线需定制, 包装长度及护套颜色均可依客户要求定制。具体参数以产品规格书为准。

Note: Stranded copper cable can be customized; Package and Cable Color can be customized according to the customer requirements. Detailed parameter please checks the specification.

六类4对双屏蔽网络线 S/FTP型
CAT6 S/FTP 4Pairs TWISTED PAIR LAN CABLE



应用范围:

CAT6类线缆适用于室内水平工作区域网络及其布线系统。在90米距离内提供250MHz带宽,应用速率为1000Mbps。采用了23号线规铜导体,中心十字骨架分离4个单独线对设计,保证传输性能稳定可靠。线对外整体纵包单面铝箔后再加铜丝编织网屏蔽,在保证同等传输带宽水平前提下,抗干扰能力提高了很多,适用于需抗电磁干扰和保密性的使用环境。铜导体分单股铜和多股绞合铜两种,护套可采用聚氯乙烯(PVC)、低烟无卤(LSZH)材料等,供客户根据线缆使用的环境灵活选择。

产品结构:

导体直径: 23号线规单股铜或多股绞合无氧铜丝
绝缘材料: HDPE高密度聚乙烯
绝缘标识: 橙、白/橙、蓝、白/蓝、绿、白/绿、棕、白/棕
中心骨架: 透明PE十字型
屏蔽层: 聚脂带+单面铝箔
排流线: 单支或多股绞合铜
屏蔽网: 无氧铜丝或镀锡铜丝编织
撕裂线: 尼龙绳
护套材料: 聚氯乙烯(PVC)、低烟无卤(LSZH)
护套外径: 7.4+/-0.2mm

技术参数:

执行标准: YD/T1019、ISO/IEC 11801、TIA/EIA 568C
额定温度: 70°C

型号规格: Specification:

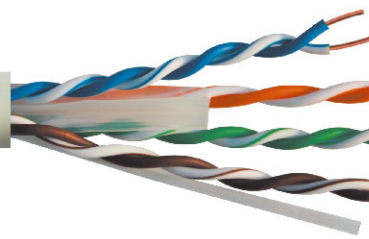
物料编号 SINGI NO:	名称规格 Style specification	包装长度 Package: Meter	包装方式 Package ways	包装数量 Package quantity
SG-3009	室内六类4对双屏蔽网线 4Pairs S/FTP CAT6 Indoor Cable	305米/305M	纸箱或轴 Carton or shaft	2箱1大箱或轴装 2 boxes/carton

注明: 多股导体网线需定制, 包装长度及护套颜色均可依客户要求定制。具体参数以产品规格书为准。

Note: Stranded copper cable can be customized; Package and Cable Color can be customized according to the customer requirements. Detailed parameter please checks the specification.

超六类4对非屏蔽网络线 UTP型
CAT6A UTP 4Pairs TWISTED PAIR LAN CABLE

SINGI WIRE AND CABLE



应用范围:

CAT6A类线缆广泛用于室内水平工作区域网络及其布线系统。在90米距离内提供500MHz带宽,应用速率为10Gbps。超六类网线采用了23号线规铜导体,中心十字骨架分离4个单独线对设计,优化设计了电缆结构,保证电气传输性能稳定可靠。铜导体分单股铜和多股绞合铜两种,护套可采用聚氯乙烯(PVC)、低烟无卤(LSZH)材料等,供客户根据线缆使用的环境灵活选择。

Application:

UTP CAT6A is widely used in indoor critical LAN applications or Structured Cabling Systems, provide 500MHZ broadband within 90M distance, the application rate is 10Gbps. You can choose Solid Copper or Stranded Copper, Jacket has PVC or LSZH, you can choose easily according to your need.

产品结构:

导体直径: 23号线规单股铜或多股绞合无氧铜丝
绝缘材料: HDPE高密度聚乙烯
绝缘标识: 橙、白/橙、蓝、白/蓝、绿、白/绿、棕、白/棕
中心骨架: 透明PE十字型
撕裂线: 尼龙绳
护套材料: 聚氯乙烯(PVC)、低烟无卤(LSZH)
护套外径: 6.6+/-0.2mm

Product structure:

Conductor Diameter: 23AWG Solid or Stranded oxygen-free Copper Wire
Insulation Material: HDPE
Insulation color: Orange, White/Orange, Blue, White/Blue, Green, White/Green, Brown, White/Brown
Cross: Transparent HDPE
Ripcord: Nylon rope
Jacket Material: PVC, LSZH
Jacket Diameter: 6.6+/-0.2mm

技术参数:

执行标准: YD/T1019、YD/T926.2
额定温度: 70°C

Technical Parameters:

Implementation of standards: YD/T1019、YD/T926.2
Rated Temperature: 70°C

型号规格: Specification:

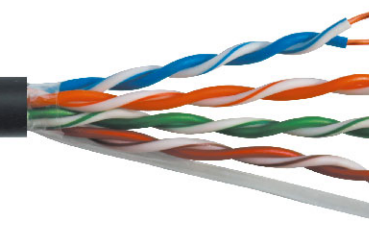
物料编号 SINGI NO:	名称规格 Style specification	包装长度 Package: Meter	包装方式 Package ways	包装数量 Package quantity
SG-3007A	室内超六类4对非屏蔽网线 4Pairs UTP CAT6A Indoor Cable	305米/305M	易拉箱 Easy Pull Box	2箱1大箱 2boxes/carton

注明: 多股导体网线需定制, 包装长度及护套颜色均可依客户要求定制。具体参数以产品规格书为准。

Note: Stranded copper cable can be customized; Package and Cable Color can be customized according to the customer requirements. Detailed parameter please checks the specification.

超五类4对非屏蔽网络线 UTP单护套室外型
CAT5E UTP 4Pairs TWISTED PAIR Outdoor (Single Jacket) LAN CABLE

SINGI WIRE AND CABLE



应用范围:

本产品广泛适用于室外水平工作区域布线系统, 室外局域网布线, 架空或围墙上敷设。在90米距离内提供100MHz带宽, 应用速率为100Mbps。室外防水型网线采用了进口PE材质, 防水性好, 同时4对绞合线整体包裹聚脂带防水结构, 可在短期有水的室外环境下使用(不可浸泡在水中使用), 可在室外长期日晒紫外线照射环境下使用。

Application:

UTP CAT5e Outdoor is widely used in outdoor critical LAN applications or Structured Cabling Systems, Outdoor LAN cabling overhead or wall laying, provide 100MHz broadband within 90M distance, the application rate is 100Mbps. Outdoor waterproof cable use imported PE materials, while 4 pairs cable packaged by Polyester tape, you can use it in the short-term water outdoor environment (rainy day) (not soaked in water), also can use under outdoor long-time sun and ultraviolet radiation environment.

产品结构:

导体直径: 24号线规单股无氧铜
绝缘材料: HDPE高密度聚乙烯
绝缘标识: 橙、白/橙、蓝、白/蓝、绿、白/绿、棕、白/棕
撕裂线: 尼龙绳
包带: 聚脂带
护套材料: 聚乙烯(HDPE)
护套外径: 5.4+/-0.2mm

Product structure:

Conductor Diameter: : 24AWG Solid or Stranded oxygen-free Copper Wire
Insulation Material: HDPE
Insulation color: Orange, White/Orange, Blue, White/Blue, Green, White/Green, Brown, White/Brown
Ripcord: Nylon rope
Taping: Polyester tape
Jacket material: HDPE
Jacket diameter: 5.4+/-0.2mm

技术参数:

执行标准: YD/T1019、ISO/IEC 11801、TIA/EIA 568C
额定温度: 70°C

Technical Parameters:

Implementation of standards: YD/T1019、ISO/IEC 11801、TIA/EIA 568C
Rated Temperature: 70°C

型号规格: Specification:

物料编号 SINGI NO:	名称规格 Style specification	包装长度 Package: Meter	包装方式 Package ways	包装数量 Package quantity
SG-3125	室外单层护套超五类4对非屏蔽网线 4pairs UTP CAT5E single jacket outdoor LAN cable	305米/305M	易拉箱 Easy Pull Box	2箱1大箱 2boxes/carton

注明: 多股导体网线需定制, 包装长度及护套颜色均可依客户要求定制。具体参数以产品规格书为准。

Note: Stranded copper cable can be customized; Package and Cable Color can be customized according to the customer requirements. Detailed parameter please checks the specification.

超五类4对非屏蔽网络线 UTP双层护套室外型
CAT5E UTP 4Pairs TWISTED PAIR Outdoor (Double Jacket) LAN CABLE



应用范围:

本产品广泛应用于室外水平工作区域布线系统，室外局域网布线，架空或围墙上敷设。在90米距离内提供100MHz带宽，应用速率为100Mbps。双层护套室外防水型网线采用了内层PVC护套，外层进口PE材质护套，防水性好，使用寿命长(不可浸泡在水中使用)，可在室外长期日晒紫外线照射环境下使用。

Application:

UTP CAT5e Outdoor is widely used in outdoor critical LAN applications or Structured Cabling Systems, Outdoor LAN cabling overhead or wall laying ,provide 100MHz broadband within 90M distance, the application rate is 100Mbps. Double jacket outdoor waterproof use inner PVC Jacket, outer imported PE Jacket, good waterproof, long service life(not soaked in water) can be used in outdoor long-term sun and ultraviolet radiation environment

产品结构:

导体直径：24号线规单股无氧铜
绝缘材料：HDPE高密度聚乙烯
绝缘标识：橙、白/橙、蓝、白/蓝、绿、白/绿、棕、白/棕
撕裂线：尼龙绳
内层护套：PVC聚氯乙烯
外层材料：聚乙烯(HDPE)
护套外径：6.4+/-0.2mm

Product structure:

Conductor Diameter: 24AWG Solid oxygen-free Copper Wire
Insulation Material: HDPE
Insulation color: Orange、White/Orange、Blue、White/Blue、Green、White/Green、Brown、White/Brown
Ripcord: Nylon rope
Inner Jacket: PVC
Outer Jacket: HDPE
Jacket diameter: 6.4+/-0.2mm

技术参数:

执行标准：YD/T1019、ISO/IEC 11801、TIA/EIA 568C
额定温度：70°C

Technical Parameters:

Implementation of standards :
YD/T1019、ISO/IEC 11801、TIA/EIA 568C
Rated Temperature : 70°C

型号规格: Specification:

物料编号 SINGI NO:	名称规格 Style specification	包装长度 Package: Meter	包装方式 Package ways	包装数量 Package quantity
SG-3124	室外双层护套超五类4对非屏蔽网线 4pairs UTP CAT5E double jacket outdoor LAN cable	305米/305M	易拉箱 Easy Pull Box	2箱1大箱 2 boxes/carton

注明：多股导体网线需定制，包装长度及护套颜色均可依客户要求定制。具体参数以产品规格书为准。

Note: Stranded copper cable can be customized; Package and Cable Color can be customized according to the customer requirements. Detailed parameter please checks the specification.

六类4对非屏蔽网络线 UTP双层护套室外型
CAT6 UTP 4Pairs TWISTED PAIR Outdoor (Double Jacket) LAN CABLE



应用范围:

CAT6类线缆适用于室内水平工作区域网络及其布线系统。在90米距离内提供250MHz带宽，应用速率为1000Mbps。采用了23号线规铜导体，中心十字骨架分离4个单独线对设计，保证传输性能稳定可靠。双层护套室外防水型网线，采用了内层PVC护套，外层进口PE材质护套，防水性好，使用寿命长(不可浸泡在水中使用)，可在室外长期日晒紫外线照射环境下使用。

Application:

CAT6 is suitable for mission critical LAN applications or Structured Cabling Systems, provide 250MHz broadband within 90M distance, the application rate is 1000Mbps Double jacket outdoor waterproof use inner PVC Jacket, outer imported PE Jacket, good waterproof, long service life(not soaked in water) can be used in outdoor long-term sun and ultraviolet radiation environment

产品结构:

导体直径：23号线规单股无氧铜
绝缘材料：HDPE高密度聚乙烯
绝缘标识：橙、白/橙、蓝、白/蓝、绿、白/绿、棕、白/棕
中心骨架：透明PE十字型
内层护套：PVC聚氯乙烯
外层护套：聚乙烯(HDPE)
护套外径：7.4+/-0.2mm

Product structure:

Conductor Diameter: 23AWG Solid oxygen-free Copper Wire
Insulation Material: HDPE
Insulation color: Orange、White/Orange、Blue、White/Blue、Green、White/Green、Brown、White/Brown
Cross: transparent HDPE
Inner Jacket: PVC
Outer Jacket: HDPE
Jacket diameter: 7.4+/-0.2mm

技术参数:

执行标准：YD/T1019、ISO/IEC 11801、TIA/EIA 568C
额定温度：70°C

Technical Parameters:

Implementation of standards :
YD/T1019、ISO/IEC 11801、TIA/EIA 568C
Rated Temperature : 70°C

型号规格: Specification:

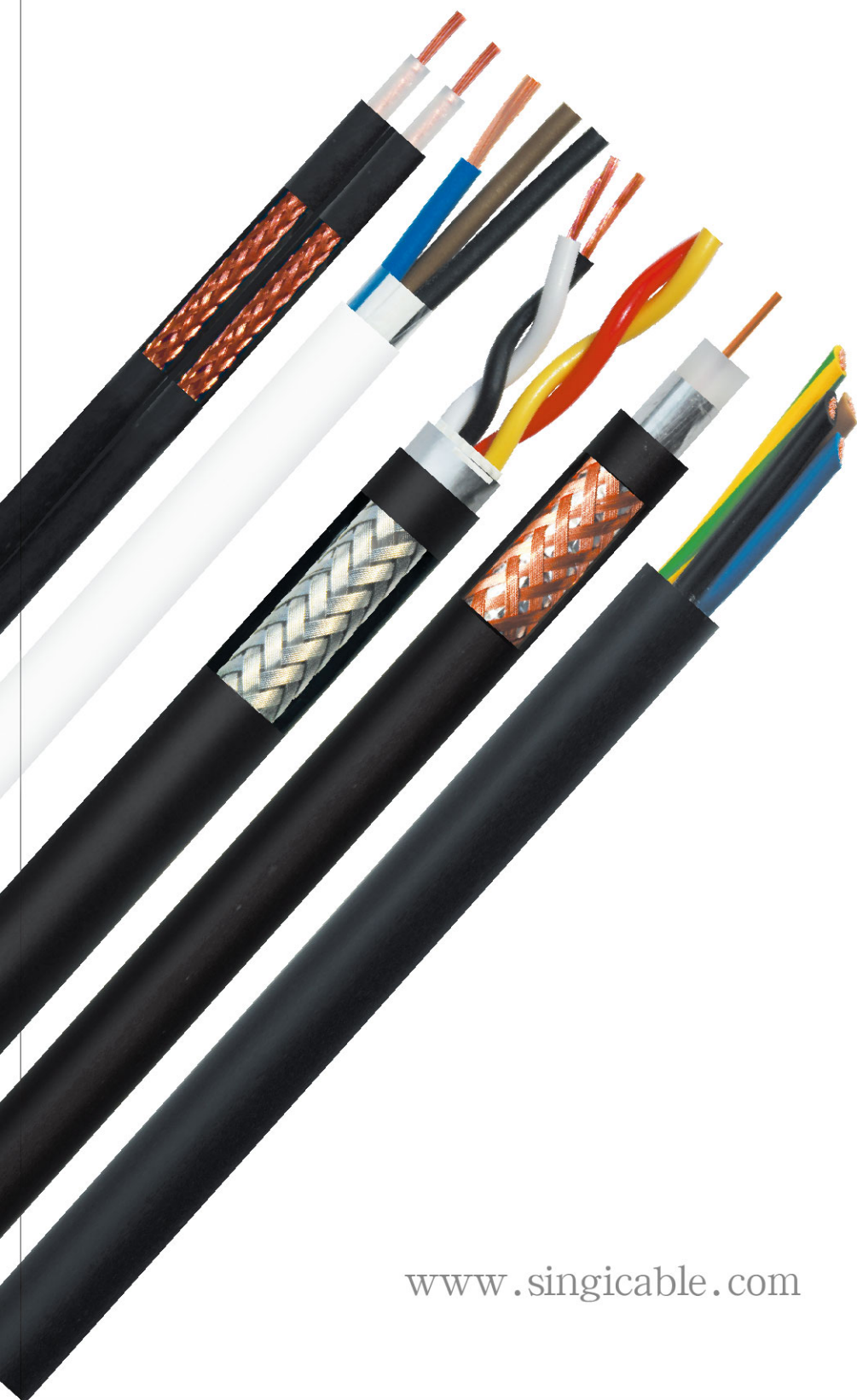
物料编号 SINGI NO:	名称规格 Style specification	包装长度 Package: Meter	包装方式 Package ways	包装数量 Package quantity
SG-3007F	室外双层护套六类4对非屏蔽网线 4pairs UTP CAT6 double jacket outdoor LAN cable	305米/305M	木轴 Wooden ree	1轴1箱 1 reel/box

注明：多股导体网线需定制，包装长度及护套颜色均可依客户要求定制。具体参数以产品规格书为准。

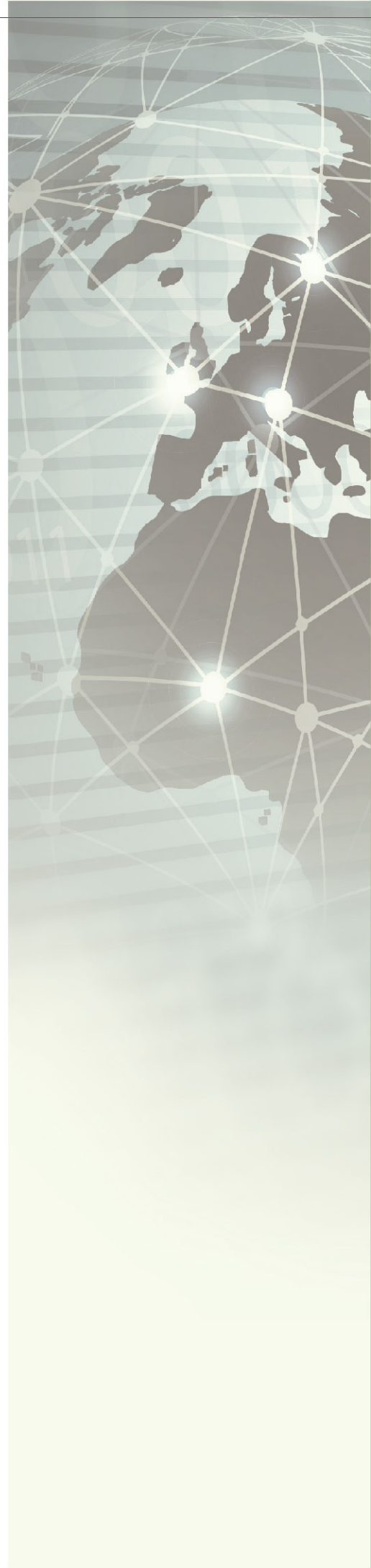
Note: Stranded copper cable can be customized; Package and Cable Color can be customized according to the customer requirements. Detailed parameter please checks the specification.

SINGI Wire&cable

【安防电缆】



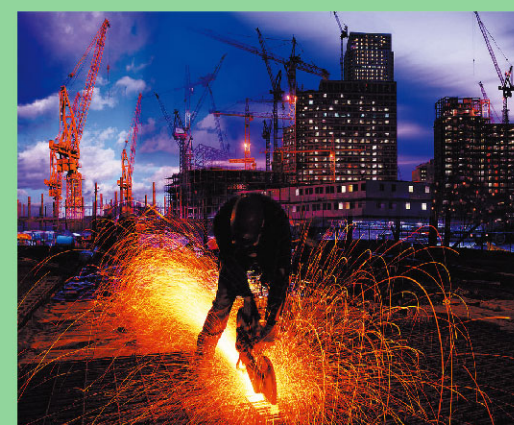
www.singicable.com



SINGI

Security Cable Electrical Cable Series

信基安防电缆系列 →



CE认证 UL认证 3C认证 足量足米 PC阻燃 环保材质

AVVR型 铜导体聚氯乙烯绝缘聚氯乙烯护套电气安装用软电缆
AVVR Copper conductor PVC insulated PVC sheathed flexible cable for installation



应用范围:

连接和控制电缆适用于干燥或潮湿的室内，特别是工业使用环境下的各种电气安装。作为控制和连接软线还特别适合用在机床制造，成套设备安装工程等场合。也适用于建筑楼宇对讲系统，防盗报警系统，通信信号的传输以及广播和弱电设备供电用线。也可用于仪器、仪表、机械工程系统、家用电器、照明等使用要求柔软场合。

产品结构:

导体：多股精绞无氧铜丝或镀锡铜丝。
绝缘：PVC聚氯乙烯。
颜色：≤0.5mm颜色表示
≥0.5mm黑色数字白色号码编号，3芯以上带有黄绿接地线
内衬层：PP带或无纺布包裹缓冲
护套：PVC聚氯乙烯。

技术参数:

执行标准：JB/T8734.4
额定电压：300/300V
额定温度：70°C
最小弯曲半径：
移动安装：15X电缆外径
固定安装：6X电缆外径
使用温度范围：
移动安装：-10°C-70°C
固定安装：-30°C-70°C

型号规格: Specification:

型号 style	截面积 cross-section	生产芯数 Produced number of cores	绝缘颜色 Insulation color	导体电阻(Ω/KM) Conductor electrical resistance:
AVVR	0.12mm ²	2-48	1、颜色区分	158
AVVR	0.2mm ²	2-42		92.3
AVVR	0.3mm ²	2-38	2、编码区分	69.2
AVVR	0.4mm ²	2-36		48.2

注明：镀锡铜丝导体需定制，包装长度及护套颜色均可依客户要求定制。具体参数以产品规格书为准。

Note: Tinned Copper Conductor need to be customized; Package and Cable Color can be customized according to the customer requirements. Detailed parameter please checks the specification

RVV型 铜导体聚氯乙烯绝缘聚氯乙烯护套软电缆
RVV Copper Conductor PVC Insulated PVC Sheathed Flexible cable



应用范围:

本产品适用于在机床制造、成套设备安装工程等场合。也可用于仪器、仪表、机械工程系统，智能建筑楼宇自动化控制系统，弱电工程，通信信号的传输以及广播和弱电设备供电用线等。

产品结构:

导体：多股精绞无氧铜丝或镀锡铜丝。
绝缘：PVC聚氯乙烯
颜色：≤0.5mm颜色表示
≥0.5mm黑色数字白色号码编号，3芯以上带有黄绿接地线
内衬层：PP带或无纺布包裹缓冲
护套：PVC聚氯乙烯（可选室外型防水材料）

技术参数:

执行标准：GB/T5023.5
额定电压：300/300V、300/500V
额定温度：70°C
最小弯曲半径：
移动安装：15X电缆外径
固定安装：6X电缆外径
使用温度范围：
移动安装：-10°C-70°C
固定安装：-30°C-70°C

型号规格: Specification:

型号 style	截面积 cross-section	生产芯数 Produced number of cores	绝缘颜色 Insulation color	导体电阻(Ω/KM) Conductor electrical resistance:
RVV	0.5mm ²	2-36		39
RVV	0.75mm ²	2-32		26
RVV	1.0mm ²	2-30	1、颜色区分	19.2
RVV	1.5mm ²	2-24		13.3
RVV	2.5mm ²	2-20	2、编码区分	7.98
RVV	4mm ²	2-16		4.61
RVV	6mm ²	2-12		3.08

注明：可根据使用场合定制室外防水型电缆，镀锡铜丝导体需定制，包装长度及护套颜色均可依客户要求定制。具体参数以产品规格书为准。

Note: Outdoor waterproof cable need to be customized according to applications;Tinned Copper Conductor needs to be customized; Package and Cable Color can be customized according to the customer requirements.Detailed parameter please checks the specification.

RVVS型 铜导体聚氯乙烯绝缘聚氯乙烯护套带双绞型软电缆
RVVS Copper conductor PVC Insulated PVC sheathed twisted flexible cable



应用范围:

适用于智能建筑楼宇自动化控制系统, 防盗报警语音系统, 一卡通系统, 智能家居, 机械仪表和电子设备等系统用线。弱电工程, 通信信号的传输以及广播和弱电设备供电用线等。也适用于工业使用环境下的各种电气安装。

产品结构:

导体: 多股精绞无氧铜丝或镀锡铜丝。
绝缘: PVC聚氯乙烯。
颜色: ≤0.5mm颜色表示 ≥0.5mm黑色数字白色号码编号
芯线: 双绞分组后成缆组合
内衬层: PP带或无纺布包裹缓冲
护套: PVC聚氯乙烯。

技术参数:

执行标准: JB/T8734.3
额定电压: 300/300V
额定温度: 70°C
最小弯曲半径: **使用温度范围:**
移动安装: 15X电缆外径 移动安装: -10°C-70°C
固定安装: 6X电缆外径 固定安装: -30°C-70°C

Application:

This cable is suitable for building automation for intelligent building control systems, burglar alarm voice systems, card systems, intelligent home, mechanical instruments and electronic equipment and other systems. For its special flexibility, it could also work in installation or fixation.

Product structure:

Conductor: Strands of oxygen-free copper /tinned copper
Insulation: PVC
Color: ≤0.5mm color signed, blue ≥0.5mm black number with white series number,
Inner liner: PP tape or non-woven for buffer
Jacket: PVC

Technical Parameters:

Implementation of standards: JB/T8734.3
Rated voltage: 300/300V
Rated Temperature : 70°C
Minimum Bending radius: **The working temperature:**
Fixing Installation:15Xouter diameter Fixing Installation:-10°C-70°C
Fixed Installation:6Xouter diameter Fixed Installation: -30°C-70°C

型号规格: Specification:

型号 style	截面积 cross-section	生产对数produced pairs	绝缘颜色 Insulation color	导体电阻(Ω/KM) Conductor electrical resistance:
RVVS	0.5mm ²	1-10		40.1
RVVS	0.75mm ²	1-8	1、颜色区分	26.7
RVVS	1.0mm ²	1-8		20
RVVS	1.5mm ²	1-8	2、编码区分	13.7
RVVS	2.5mm ²	1-8		8.21

注明: 镀锡铜丝导体需定制, 包装长度及护套颜色均可依客户要求定制。具体参数以产品规格书为准。

Note: Tinned Copper Conductor need to be customized; Package and Cable Color can be customized according to the customer requirements. Detailed parameter please checks the specification.

RVVB扁形 铜导体聚氯乙烯绝缘聚氯乙烯护套软电缆
RVVB Flat copper conductor PVC Insulated PVC sheathed Flexible cable



应用范围:

本产品适用于在机床制造、成套设备安装工程等场合。也可用于仪器、仪表、机械工程系统, 智能建筑楼宇自动化控制系统, 弱电工程, 通信信号的传输以及广播和弱电设备供电用线等。

产品结构:

导体: 多股精绞无氧铜丝或镀锡铜丝。
绝缘: PVC聚氯乙烯。
颜色: 颜色区分, 可依客户要求
护套: PVC聚氯乙烯。

技术参数:

执行标准: GB/T5023
额定电压: 300/300V、300/500V
额定温度: 70°C
最小弯曲半径: **使用温度范围:**
移动安装: 15X电缆外径 移动安装: -10°C-70°C
固定安装: 6X电缆外径 固定安装: -30°C-70°C

Application:

This cable is suitable for machine tool manufacture, whole set equipment installation, equipment, instruments, communication signal transmission.

Product structure:

Conductor: Strands of oxygen-free Copper /tinned copper
Insulation: PVC
Color: color Distinguish, according to customer' s need
Jacket: PVC

Technical Parameters:

Implementation of standards: GB/T5023
Rated voltage: 300/300V、300/500V
Rated Temperature : 70°C
Minimum Bending radius: **The working temperature:**
Fixing Installation:15Xouter diameter Fixing Installation:-10°C-70°C
Fixed Installation:6Xouter diameter Fixed Installation: -30°C-70°C

型号规格: Specification:

型号 style	截面积 cross-section	生产芯数 Produced number of cores	绝缘颜色 Insulation color	导体电阻(Ω/KM) Conductor electrical resistance:
RVVB	0.5mm ²	2		39
RVVB	0.75mm ²	2		26
RVVB	1.0mm ²	2		19.2
RVVB	1.5mm ²	2	颜色区分	13.3
RVVB	2.5mm ²	2		7.98
RVVB	4mm ²	2		4.61
RVVB	6mm ²	2		3.08

注明: 镀锡铜丝导体需定制, 包装长度及护套颜色均可依客户要求定制。具体参数以产品规格书为准。

Note: Tinned Copper Conductor need to be customized; Package and Cable Color can be customized according to the customer requirements. Detailed parameter please checks the specification.

RV型 铜导体聚氯乙烯绝缘软电缆
RV Copper conductor PVC insulated flexible cable



应用范围:

移动家用电器、小型电动工具、仪器仪表、电信设备、自动化装置及动力与家居照明用装置的移动连接，也可作为机器设备内部安装。

Application:

Suitable for Mobile home appliances, small electric tools, instruments, telecommunications equipment, automation equipment and household lighting and power connections with mobile devices, can also be used as internal installation of machinery and equipment.

产品结构:

导体：多股精绞无氧铜丝。
绝缘：PVC聚氯乙烯。
颜色：彩色，地线用黄/绿色分。

Product structure:

Conductor: Strands of oxygen-free copper /tinned copper
Insulation: PVC
Color: multicolor, drain wire use yellow/blue Distinguish

技术参数:

执行标准：GB/T5023.3
额定电压：450/750V
额定温度：70°C
最小弯曲半径：
移动安装：6X电缆外径
固定安装：4X电缆外径

使用温度范围：
移动安装：-5°C-70°C
固定安装：-10°C-70°C

Technical Parameters:

Implementation of standards: GB/T5023.3
Rated voltage: 450/750V
Rated Temperature : 70°C
Minimum Bending radius: **The working temperature:**
Fixing Installation:6Xouter diameter Fixing Installation: -5°C-70°C
Fixed Installation:4Xouter diameter Fixed Installation: -10°C-70°C

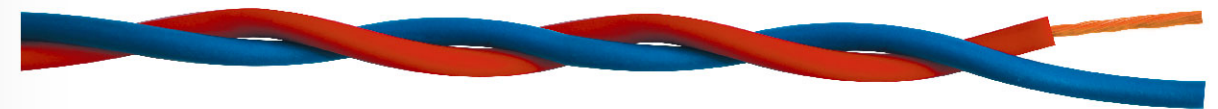
型号规格: Specification:

型号 style	芯数*截面积 Number of cores *cross-section	导体结构(mm) conductor structure	平均外径(mm) average diameter	导体电阻(Ω/KM) Conductor electrical resistance:
RV	0.5mm ²	28/0.15	2.2	39
RV	0.75mm ²	42/0.15	2.4	26
RV	1.0mm ²	32/0.2	2.6	19.5
RV	1.5mm ²	48/0.2	3.1	13.3
RV	2.5mm ²	49/0.25	3.7	7.98
RV	4mm ²	56/0.3	4.3	4.95
RV	6mm ²	84/0.3	5.0	3.3
RV	10mm ²	84/0.4	6.5	1.91
RV	16mm ²	126/0.4	7.8	1.21

注明：包装长度及电缆颜色均可依客户要求定制。具体参数以产品规格书为准。

Note: Package and Cable Color can be customized according to the customer requirements.Detailed parameter please checks the specification.

RVS型 铜导体聚氯乙烯绝缘绞型连接用软电缆
RVS Copper conductor PVC Insulated twisted Flexible cable for connection



应用范围:

适用于交流额定电压300/300V及以下照明、电器、仪器仪表和电子设备电源连接等用线。也可作为机器设备内部安装用线。

Application:

Suitable for AC rated voltage 300 / 300V and below electrical, instrumentation and electronic equipment and automation devices internal wiring, can also be used as an internal installation of machinery and equipment cables.

产品结构:

导体：多股精绞无氧铜丝。
绝缘：PVC聚氯乙烯。
颜色：双色区分。

Product structure:

Conductor: Strands of oxygen-free Copper
Insulation: PVC
Color: double color Distinguish

技术参数:

执行标准：JB/T8734.3
额定电压：300/300V
额定温度：70°C
最小弯曲半径：
移动安装：15X电缆外径
固定安装：6X电缆外径

使用温度范围：
移动安装：-10°C-70°C
固定安装：-30°C-70°C

Technical Parameters:

Implementation of standards: JB/T8734.3
Rated voltage: 300/300V
Rated Temperature : 70°C
Minimum Bending radius: **The working temperature:**
Fixing Installation:15Xouter diameter Fixing Installation:-10°C-70°C
Fixed Installation:6Xouter diameter Fixed Installation: -30°C-70°C

型号规格: Specification:

型号 style	芯数*截面积 Number of cores *cross-section	导体结构(mm) conductor structure	平均外径(mm) average diameter	导体电阻(Ω/KM) Conductor electrical resistance:
RVS	2*0.5mm ²	28/0.15	6.0	39
RVS	2*0.75mm ²	42/0.15	6.2	26
RVS	2*1.0mm ²	32/0.2	6.6	19.5
RVS	2*1.5mm ²	48/0.2	7.2	13.3
RVS	2*2.5mm ²	49/0.25	8.2	7.98
RVS	2*4mm ²	56/0.3	9.2	4.95
RVS	2*6mm ²	84/0.3	10.6	3.3

注明：包装长度及电缆颜色均可依客户要求定制。具体参数以产品规格书为准。

Note: Package and Cable Color can be customized according to the customer requirements.Detailed parameter please checks the specification.



应用范围:

适用于交流额定电压300/300V及以下电器，仪表和电子设备及自动化装置内部布线用的铜芯聚氯乙烯绝缘扁形安装用电线。

Application:

Suitable for AC rated voltage 300 / 300V and below electrical, instrumentation and electronic equipment and automation devices internal wiring.

产品结构:

导体：多股精绞无氧铜丝。
绝缘：PVC聚氯乙烯。
颜色：红黑色或按客户要求。

Product structure:

Conductor: Strands of oxygen-free Copper
Insulation: PVC
Color: Red black or according to client's need

技术参数:

执行标准：JB/T8734.3
额定电压：300/300V
额定温度：70°C
最小弯曲半径：
移动安装：15X电缆外径
固定安装：6X电缆外径

使用温度范围：
移动安装：-10°C-70°C
固定安装：-30°C-70°C

Technical Parameters:

Implementation of standards: JB/T8734.3
Rated voltage: 300/300V
Rated Temperature : 70°C
Minimum Bending radius: **The working temperature:**
Fixing Installation:15Xouter diameter Fixing Installation:-10°C-70°C
Fixed Installation:6Xouter diameter Fixed Installation: -30°C-70°C

型号规格: Specification:

型号 style	芯数*截面积 Number of cores *cross-section	导体结构(mm) conductor structure	平均外径(mm) average diameter	导体电阻(Ω/KM) Conductor electrical resistance:
RVB	2*0.5mm ²	28/0.15	2.8X5.6	39
RVB	2*0.75mm ²	42/0.15	3.0X6.0	26
RVB	2*1.0mm ²	32/0.2	3.2X6.4	19.5
RVB	2*1.5mm ²	48/0.2	3.4X6.8	13.3
RVB	2*2.5mm ²	140/0.15	3.8X7.2	7.98
RVB	2*4mm ²	224/0.15	5.0X10.0	4.95
RVB	2*6mm ²	189/0.2	5.5X11	3.3

注明：包装长度及电缆颜色均可依客户要求定制。具体参数以产品规格书为准。

Note: Package and Cable Color can be customized according to the customer requirements. Detailed parameter please checks the specification.



应用范围:

作为测量、监测和控制电缆适合用在机床制造、成套设备安装工程、办公自动设备、以及数据处理系统等场合。机械仪表和电子设备等，需要屏蔽抗干扰系统用线。

Application:

This cable is suitable for machine tools production, the installation engineering of complete equipment, Office Automation equipments, data processing system and other related situations.

产品结构:

导体：多股精绞无氧铜丝或镀锡铜丝。
绝缘：PVC聚氯乙烯。
颜色：≤0.5mm颜色表示
≥0.5mm黑色数字白色号码编号，3芯以上带有黄绿接地线
屏蔽：铝箔麦拉+裸铜丝或镀锡铜丝编织
护套：PVC聚氯乙烯。

Product structure:

Conductor: Strands of oxygen-free Copper /tinned copper
Insulation: PVC
Color: ≤0.5mm color signed
blue ≥0.5mm black number with white series number, if more 3 cores, will have yellow and green earth cables
Shield: Mylar-Aluminum Foil +bare copper or tinned copper braiding
Jacket: PVC

技术参数:

执行标准：JB/T8734.5
额定电压：300/300V
额定温度：70°C
最小弯曲半径：
移动安装：15X电缆外径
固定安装：6X电缆外径

使用温度范围：
移动安装：-10°C-70°C
固定安装：-30°C-70°C

Technical Parameters:

Implementation of standards: JB/T8734.5
Rated voltage: 300/300V
Rated Temperature : 70°C
Minimum Bending radius: **The working temperature:**
Fixing Installation:15Xouter diameter Fixing Installation:-10°C-70°C
Fixed Installation:6Xouter diameter Fixed Installation: -30°C-70°C

型号规格: Specification:

型号 style	截面积 cross-section	生产芯数 Produced number of cores	绝缘颜色 Insulation color	导体电阻(Ω/KM) Conductor electrical resistance:
RVVP	0.5mm ²	2-34		39
RVVP	0.75mm ²	2-30		26
RVVP	1.0mm ²	2-28	1、颜色区分	19.5
RVVP	1.5mm ²	2-24		13.3
RVVP	2.5mm ²	2-20	2、编码区分	7.98
RVVP	4mm ²	2-16		4.95

注明：镀锡铜丝导体、编织需定制，包装长度及护套颜色均可依客户要求定制。具体参数以产品规格书为准。

Note: Tinned Copper Conductor and Braiding need to be customized; Package and Cable Color can be customized according to the customer requirements. Detailed parameter please checks the specification.



应用范围:

作为测量、监测和控制电缆适合用在机床制造、成套设备安装工程、办公自动设备、以及数据处理系统等场合。机械仪表和电子设备等需要屏蔽抗干扰系统用线。双绞节距短，抗串音特性优秀，适用于高速信号回线的配置。

Application:

This cable is suitable for machine tools production, the installation engineering of complete equipment, Office Automation equipments, data processing system and other related situations.

产品结构:

导体：多股精绞无氧铜丝或镀锡铜丝。
绝缘：PVC聚氯乙烯。
颜色：≤0.5mm颜色表示 ≥0.5mm黑色数字白色号码编号
芯线：双绞分组后成缆组合
屏蔽：铝箔麦拉+裸铜丝或镀锡铜丝编织
护套：PVC聚氯乙烯。

Product structure:

Conductor: Strands of oxygen-free Copper /tinned copper
Insulation: PVC
Color: ≤0.5mm color signed
blue ≥0.5mm black number with white series number
Shield: Mylar-Aluminum Foil +bare copper or tinned copper braiding
Jacket: PVC

技术参数:

执行标准：JB/T8734.3
额定电压：300/300V
额定温度：70℃
最小弯曲半径：
移动安装：15X电缆外径
固定安装：6X电缆外径

使用温度范围：
移动安装：-10℃-70℃
固定安装：-30℃-70℃

Technical Parameters:

Implementation of standards: JB/T8734.3
Rated voltage: 300/300V
Rated Temperature : 70℃
Minimum Bending radius:
Fixing Installation:15Xouter diameter
Fixed Installation:6Xouter diameter

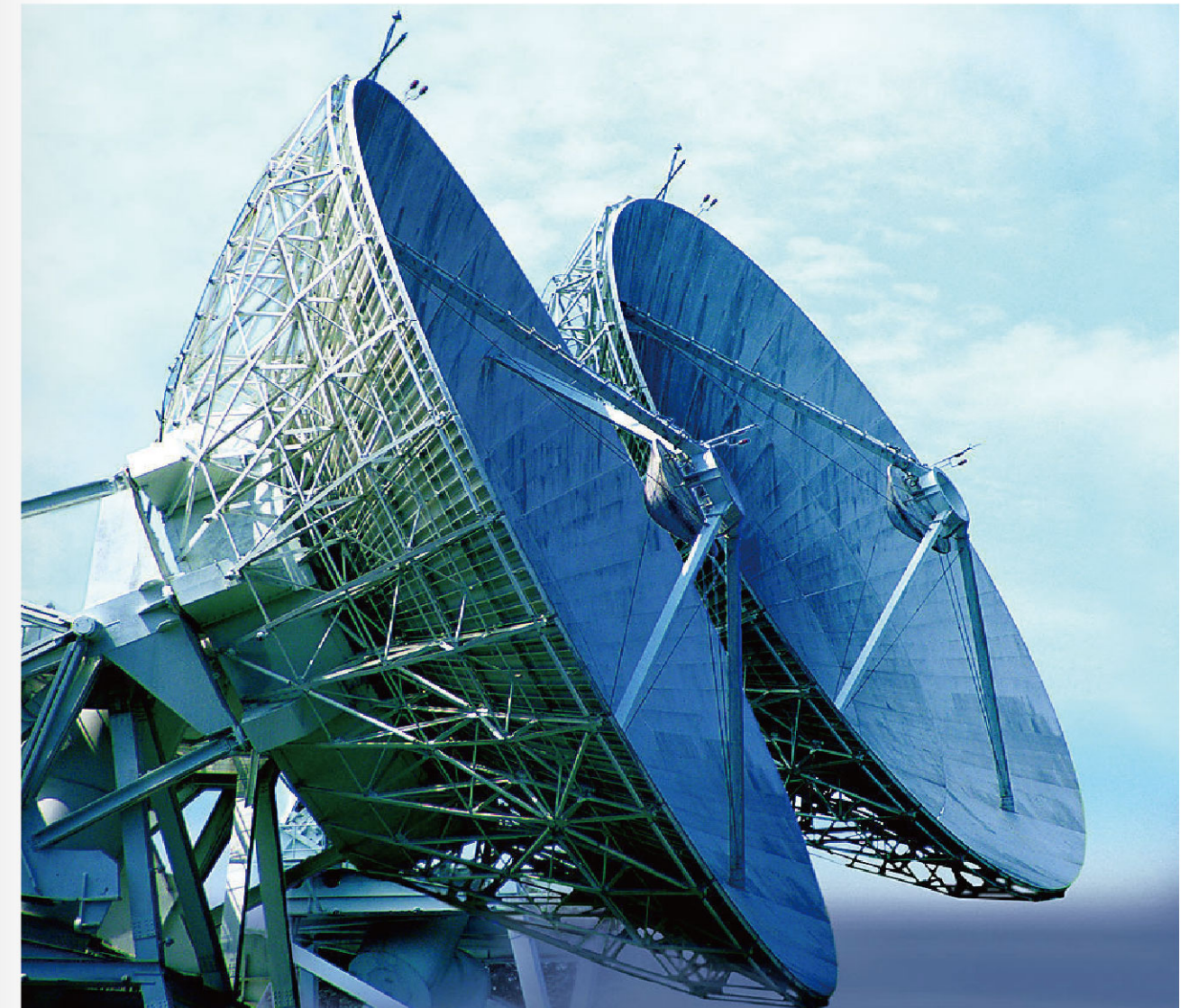
The working temperature:
Fixing Installation:-10℃-70℃
Fixed Installation: -30℃-70℃

型号规格: Specification:

型号 style	截面积 cross-section	生产对数 Produced Pairs	绝缘颜色 Insulation color	导体电阻(Ω/KM) Conductor electrical resistance:
RVVSP	0.5mm ²	1-18		39
RVVSP	0.75mm ²	1-16	1、颜色区分	26
RVVSP	1.0mm ²	1-14		19.5
RVVSP	1.5mm ²	1-12	2、编码区分	13.3
RVVSP	2.5mm ²	1-10		7.98

注明：镀锡铜丝导体、编织需定制，包装长度及护套颜色均可依客户要求定制。具体参数以产品规格书为准。

Note: Tinned Copper Conductor and Braiding need to be customized; Package and Cable Color can be customized according to the customer requirements. Detailed parameter please checks the specification.



铜导体聚氯乙烯绝缘扁形音响设备专用软电缆
Copper conductor PVC insulated flat audio flexible cable for Audio equipment



应用范围:
适用于音响喇叭连接线, 音响设备及其他音频设备等音响用线, 用于传输低频、音频信号, 适用于音响工程、会议室、家庭影院。

Application:
Suitable for stereo speaker cable, audio equipment and other audio equipment, audio lines, suitable for sound engineering, conference room, home theater.

产品结构:
导体: 多股超细精绞无氧铜丝或镀锡铜丝, 或金银铜丝。
绝缘: PVC聚氯乙烯、混合特殊PVC
颜色: 透明色或其他颜色

Product structure:
Conductor: strands of Oxygen-free copper/tinned copper/Yellow Gold Wire
Insulation: PVC、Mixed special PVC
Color: Transparent or other color

技术参数:
执行标准: Q/321001LLD02
额定电压: 300/300V
额定温度: 70°C
最小弯曲半径: 使用温度范围:
移动安装: 15X电缆外径 移动安装: -10°C-70°C
固定安装: 6X电缆外径 固定安装: -30°C-70°C

Technical Parameters:
Implementation of standards: Q/321001LLD02
Rated voltage: 300/300V
Rated Temperature : 70°C
Minimum Bending radius: The working temperature:
Fixing Installation:15Xouter diameter Fixing Installation:-10°C-70°C
Fixed Installation:6Xouter diameter Fixed Installation: -30°C-70°C

型号规格: Specification:

型号 style	截面积 cross-section	生产芯数 produced number of cores	导体材质 Conductor material	导体电阻(Ω/KM) Conductor electrical resistance:
RVH	0.5mm ²	2		39
RVH	0.75mm ²	2		26
RVH	1.0mm ²	2	1、纯铜 Bare Copper	19.2
RVH	1.5mm ²	2	2、镀锡铜 Tinned Copper	13.3
RVH	2.5mm ²	2	3、镀锡+纯铜 Bare Copper+Tinned Copper	7.98
RVH	4mm ²	2		4.95
RVH	6mm ²	2		3.3

注明: 镀锡铜、纯铜+镀锡铜导体需定制, 包装长度及电线颜色均可依客户要求定制。具体参数以产品规格书为准。

Note: Tinned Copper、bare copper+ Tinned Copper need to be customized; Package and Cable Color can be customized according to the customer requirements. Detailed parameter please checks the specification.

SYWV-75型 物理发泡屏蔽有线电视同轴电缆
Foamed PE Braiding CCTV Cable Coaxial Cable



应用范围:
用于1GHz以下闭路电视系统, 共用天线电视系统, 有线电视系统作分支线和用户线及其他电子装置用物理发泡聚乙烯绝缘同轴电缆。

Application:
This cable is suitable for CCTV systems for below 1GHz, sharing antenna television systems and other electronic devices.

产品结构:
导体: 单根裸铜导体
绝缘: 物理发泡聚乙烯
屏蔽: 铝箔内屏蔽
屏蔽: 镀锡铜或铝镁合金丝编织网
屏蔽数目: 64、96、128、160、192、2P、4P
护套: PVC聚氯乙烯
护套: PE聚乙烯(室外型)

Product structure:
Conductor: Solid bare copper
Insulation: Foamed PE
Shield 1: Aluminum Foil
Shield 2: Tinned copper /Al-Mg Alloy Wire Braiding
Braiding No:64、96、128、160、192、2P、4P
Jacket: PVC
Outdoor Jacket: PE

技术参数:
执行标准: GY/T135
特性阻抗: 75Ω
额定温度: 70°C
最小弯曲半径: 使用温度范围:
移动安装: 15X电缆外径 移动安装: -10°C-70°C
固定安装: 6X电缆外径 固定安装: -20°C-70°C

Technical Parameters:
Implementation of standards: GY/T135
Characteristic impedance:75Ω
Rated Temperature : 70°C
Minimum Bending radius: The working temperature:
Fixing Installation:15Xouter diameter Fixing Installation:-10°C-70°C
Fixed Installation:6Xouter diameter Fixed Installation: -20°C-70°C

型号规格: Specification:

型号 style	导体直径(mm) Conductor diameter	绝缘外径(mm) insulation diameter	电缆外径(mm) Cable diameter	特性阻抗(Ω) Impedence:
SYWV-75-5	1.0	4.8	7.2	≥20000
SYWV-75-7	1.66	7.2	10.3	≥20000
SYWV-75-9	2.15	9.0	12.3	≥20000

注明: 室外防水型电缆需定制, 包装长度及护套颜色均可依客户要求定制。具体参数以产品规格书为准。

Note: Outdoor waterproof cable can be customized; Package and Cable Color can be customized according to the customer requirements. Detailed parameter please checks the specification.

SINGI WIRE AND CABLE



应用范围:

用于闭路监控, 视频会议, 可视对讲系统等传输模拟信号。也适用于无线电通信和采用类似技术的电子装置中。

Application:

Coaxial cable is suitable for closed-circuit monitoring, video conferencing, video intercom systems transmit analog signals. Also is suitable for radio communications

产品结构:

导体: 单根或多根绞合裸铜丝
绝缘: LDPE实芯聚乙烯绝缘
屏蔽: 铝箔内屏蔽
屏蔽: 无氧铜编织
屏蔽数目: 64、96、128
护套: PVC聚氯乙烯
外护套: PE聚乙烯(室外型)

Product structure:

Conduct: Solid or Strands of bare copper or Tinned copper
Insulation: LDPE
Shield 1: Aluminum Foil
Shield 2: Bare copper braiding
Braiding No: 64、96、128
Jacket: PVC
Outdoor Jacket: PE

技术参数:

执行标准: GY/T14864
特性阻抗: 75Ω
额定温度: 70°C
最小弯曲半径: 使用温度范围:
移动安装: 15X电缆外径 移动安装: -10°C-70°C
固定安装: 6X电缆外径 固定安装: -20°C-70°C

Technical Parameters:

Implementation of standards: GY/T14864
Characteristic impedance: 75Ω
Rated Temperature : 70°C
Minimum Bending radius: The working temperature:
Fixing Installation: 15X outer diameter Fixing Installation: -10°C-70°C
Fixed Installation: 6X outer diameter Fixed Installation: -20°C-70°C

型号规格: Specification:

型号 style	导体直径(mm) Conductor diameter	绝缘外径(mm) insulation diameter	电缆外径(mm) Cable diameter	特性阻抗(Ω) Impedence:
SYV-75-3	1/0.5	3.0	5.0	5000
SYV-75-5	1/0.75	4.8	7.9	5000
SYV-75-7	1/1.15	7.25	10.3	5000

注明: 多股导体和室外防水型电缆需定制, 包装长度及护套颜色均可依客户要求定制。具体参数以产品规格书为准。

Note: Strands of copper and outdoor waterproof cable can be customized; Package and Cable Color can be customized according to the customer requirements. Detailed parameter please checks the specification.

SINGI WIRE AND CABLE



应用范围:

该产品主要用于同轴光纤混合网(HFT)中传输数据模拟信号和数字信号, 可与北美各类插件配合使用, 也可用于电脑网络(以太网)互连。

Application:

The products are mainly used in coaxial hybrid fiber (HFT) to transmit data analog and digital signals can be used in conjunction with the North American various types of plug-in can also be used for computer network (Ethernet) interconnect

产品结构:

导体: 单根和多根绞合裸铜或镀锡铜丝
绝缘: LDPE实芯聚乙烯、FPE物理发泡聚乙烯。
屏蔽: 铝箔内屏蔽
屏蔽: 无氧铜、镀锡铜编织或铝镁合金丝编织
屏蔽数目: 64、80、96、112、128
外皮: PVC聚氯乙烯护套

Product structure:

Conduct: Solid or Strands of copper or Tinned copper
Insulation: LDPE, FPE
Shield 1: Aluminum Foil
Shield 2: Bare copper, Tinned Copper or AL-Mg Alloy wire braiding
Braiding No: 64、80、96、112、128
Jacket: PVC

技术参数:

执行标准: MIL-C-17
特性阻抗: 50Ω、75Ω
额定温度: 70°C
最小弯曲半径: 使用温度范围:
移动安装: 15X电缆外径 移动安装: -10°C-70°C
固定安装: 6X电缆外径 固定安装: -20°C-70°C

Technical Parameters:

Implementation of standards: MIL-C-17
Characteristic impedance: 50Ω、75Ω
Rated Temperature : 70°C
Minimum Bending radius: The working temperature:
Fixing Installation: 15X outer diameter Fixing Installation: -10°C-70°C
Fixed Installation: 6X outer diameter Fixed Installation: -20°C-70°C

型号规格: Specification:

型号 style	导体直径(mm) Conductor diameter	绝缘外径(mm) insulation diameter	电缆外径(mm) Cable diameter	特性阻抗(Ω) Impedence:
RG59	0.81	3.66	6.1	50
RG6	1.02	4.57	6.9	75
RG11	1.63	7.11	10.2	75
RG174	7/0.16	1.52	2.9	50
RG58	19/0.18	2.95	5.0	50

注明: 镀锡铜导体需定制, 包装长度及护套颜色均可依客户要求定制。具体参数以产品规格书为准。

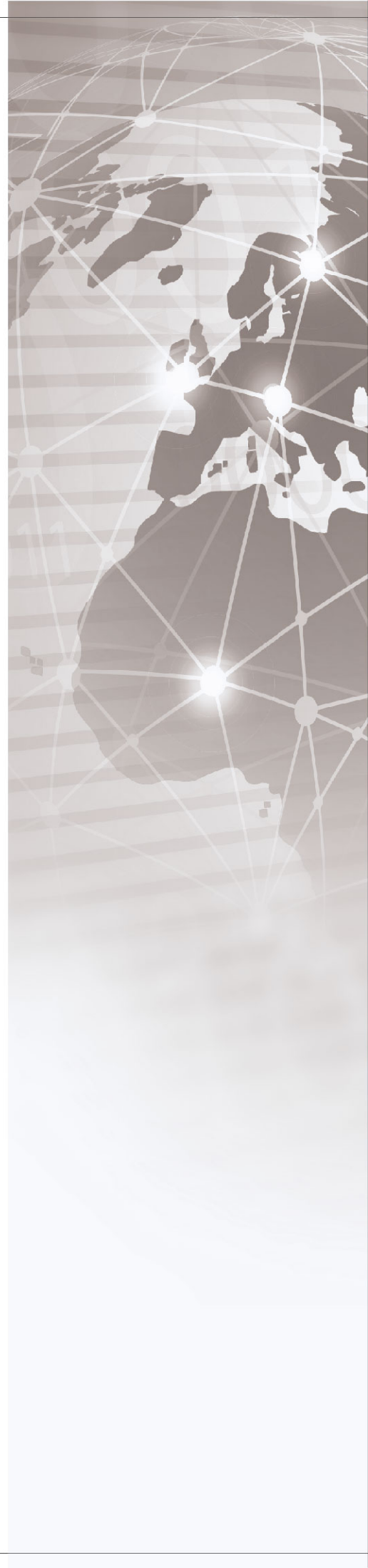
Note: Tinned Copper Conductor need to be customized; Package and Cable Color can be customized according to the customer requirements. Detailed parameter please checks the specification.

SINGI Wire&cable

【特种电缆】



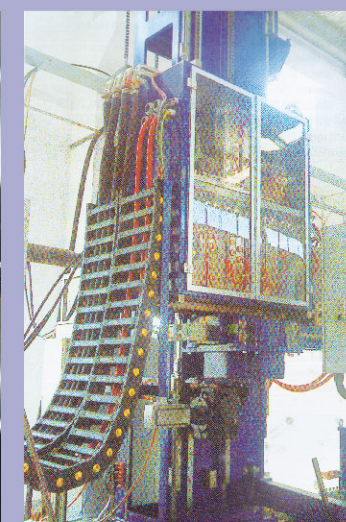
www.singicable.com



SINGI

Special Cable Series

信基特种电缆系列 →



CE认证 UL认证 CCC 足量足米 PC阻燃 环保材质

SINGI WIRE AND CABLE

应用范围:

适用于干燥或潮湿的室内，无强应力缓释或强制引导的自由连续往复运动下的安装，工业使用环境下的频繁弯曲场合，如工业机器人、机床加工设备、物流输送系统、起重机场合等。

产品结构:

导体：多股超细精绞无氧铜丝或镀锡铜丝。
绝缘：特殊混合PVC
颜色：≤0.5mm颜色表示
≥0.5mm黑色数字白色号码编号，3芯以上带有黄绿接地线
芯线：一般绞合间隙填充和双绞分组间隙填充。
护套：特殊改性PVC（一般柔性、高柔性、超柔性）。

技术参数:

额定电压：300/300V、300/500V
最小弯曲半径：
移动安装：15X电缆外径
固定安装：5X电缆外径

使用温度范围：
移动安装：-5°C-90°C
固定安装：-30°C-90°C

型号规格: Specification:

型号 style	截面积 cross-section	生产芯数 Produced number of cores	绝缘颜色 Insulation color	导体电阻(Ω/KM) Conductor electrical resistance:
TRVV	0.2mm ²	2-36		92.3
TRVV	0.3mm ²	2-36		69.2
TRVV	0.5mm ²	2-36	1、颜色区分	39
TRVV	0.75mm ²	2-32		26
TRVV	1.0mm ²	2-30	2、编码区分	19.5
TRVV	1.5mm ²	2-24		13.3
TRVV	2.5mm ²	2-20		7.98

注明：可根据使用场合定制电缆柔性程度(一般柔性、高柔性、超柔性)，包装长度及护套颜色均可依客户要求定制。具体参数以产品规格书为准。

Note: You can select generally flexible, highly flexible, and ultra-flexible according to applications, Package and Cable Color can be customized according to the customer requirements. Detailed parameter please checks the specification.

SINGI WIRE AND CABLE

应用范围:

适用于干燥或潮湿的室内，无强应力缓释或强制引导的自由连续往复运动下的安装，工业使用环境下的频繁弯曲场合，如工业机器人、机床加工设备、物流输送系统、起重机场合等。由于采用了铝箔麦拉加铜网编织双层屏蔽，有效抵抗电磁波干扰。

产品结构:

导体：多股超细精绞无氧铜丝或镀锡铜丝。
绝缘：特殊混合PVC
颜色：≤0.5mm颜色表示
≥0.5mm黑色数字白色号码编号，3芯以上带有黄绿接地线
芯线：一般绞合间隙填充和双绞分组间隙填充。
屏蔽：裸铜丝或镀锡铜丝编织，密度在80%以上。
护套：特殊改性PVC（一般柔性、高柔性、超柔性）。

技术参数:

额定电压：300/300V
最小弯曲半径：
移动安装：15X电缆外径
固定安装：5X电缆外径

使用温度范围：
移动安装：-5°C-90°C
固定安装：-30°C-90°C

型号规格: Specification:

型号 style	截面积 cross-section	生产芯数 Produced number of cores	绝缘颜色 Insulation color	导体电阻(Ω/KM) Conductor electrical resistance:
TRVVP	0.2mm ²	2-36		92.3
TRVVP	0.3mm ²	2-36		69.2
TRVVP	0.5mm ²	2-36	1、颜色区分	39
TRVVP	0.75mm ²	2-32		26
TRVVP	1.0mm ²	2-30	2、编码区分	19.5
TRVVP	1.5mm ²	2-24		13.3
TRVVP	2.5mm ²	2-20		7.98

注明：可根据使用场合定制电缆柔性程度(一般柔性、高柔性、超柔性)，包装长度及护套颜色均可依客户要求定制。具体参数以产品规格书为准。

Note: You can select generally flexible, highly flexible, and ultra-flexible according to applications, Package and Cable Color can be customized according to the customer requirements. Detailed parameter please checks the specification.

SINGI WIRE AND CABLE

应用范围:

适用于干燥或潮湿的室内, 无应力缓释可强制引导的自由非连续性往复运动下的安装, 以及工业使用环境下的偶尔弯曲移动场合, 如工业机器人、机床、磨床等。此款电缆具有防水、耐油、耐寒、阻燃、弯曲寿命比普通安装线长等特点。

产品结构:

导体: 多股精绞无氧铜丝或镀锡铜丝。
绝缘: 特殊混合PVC
颜色: ≤0.5mm颜色表示
≥0.5mm黑色数字白色号码编号, 3芯以上带有黄绿接地线
芯线: 一般绞合间隙填充和双绞分组间隙填充。
护套: 特殊改性耐油PVC

技术参数:

执行标准: GB/T5023.7、耐油性通过ASTM标准GB/T2951.5标准
额定电压: 300/500V
额定温度: 70°C
最小弯曲半径: 使用温度范围:
移动安装: 15X电缆外径 移动安装: -5°C-70°C
固定安装: 4X电缆外径 固定安装: -40°C-105°C

型号规格: Specification:

型号 style	截面积 cross-section	生产芯数 Produced number of cores	绝缘颜色 Insulation color	导体电阻(Ω/KM) Conductor electrical resistance:
RVVY	0.5mm ²	2-36		39
RVVY	0.75mm ²	2-32	1、颜色区分	26
RVVY	1.0mm ²	2-26		19.5
RVVY	1.5mm ²	2-24	2、编码区分	13.3
RVVY	2.5mm ²	2-20		7.98

注明: 镀锡铜导体电缆需定制, 包装长度及护套颜色均可依客户要求定制。具体参数以产品规格书为准。

Note: Package and Cable Color can be customized according to the customer requirements. Detailed parameter please checks the specification.

SINGI WIRE AND CABLE

应用范围:

适用于干燥或潮湿的室内, 无应力缓释可强制引导的自由非连续性往复运动下的安装, 以及工业使用环境下的偶尔弯曲移动场合, 如工业机器人、机床、磨床等。采用了铝箔麦拉加铜网编织双层屏蔽, 有效抵抗电磁波干扰。此款电缆具有防水、耐油、耐寒、阻燃、弯曲寿命比普通安装线长等特点。

产品结构:

导体: 多股精绞无氧铜丝或镀锡铜丝。
绝缘: 特殊混合PVC
颜色: ≤0.5mm颜色表示
≥0.5mm黑色数字白色号码编号, 3芯以上带有黄绿接地线
芯线: 一般绞合间隙填充和双绞分组间隙填充。
屏蔽: 裸铜丝或镀锡铜丝编织
护套: 特殊改性耐油PVC

技术参数:

执行标准: GB/T5023.7、耐油性通过ASTM标准GB/T2951.5标准
额定电压: 300/500V
额定温度: 70°C
最小弯曲半径: 使用温度范围:
移动安装: 15X电缆外径 移动安装: -5°C-70°C
固定安装: 4X电缆外径 固定安装: -40°C-105°C

型号规格: Specification:

型号 style	截面积 cross-section	生产芯数 Produced number of cores	绝缘颜色 Insulation color	导体电阻(Ω/KM) Conductor electrical resistance:
RVVYP	0.5mm ²	2-36		39
RVVYP	0.75mm ²	2-32	1、颜色区分	26
RVVYP	1.0mm ²	2-26		19.5
RVVYP	1.5mm ²	2-24	2、编码区分	13.3
RVVYP	2.5mm ²	2-20		7.98

注明: 镀锡铜导体电缆需定制, 包装长度及护套颜色均可依客户要求定制。具体参数以产品规格书为准。

Note: Tinned copper conductor cable can be customized. Package and Cable Color can be customized according to the customer requirements. Detailed parameter please checks the specification.



应用范围:

适用于干燥或潮湿的室内，无强应力缓释或强制引导的自由连续往复运动下的安装，工业使用环境下的弯曲场合，如机床加工设备、物流输送系统、起重机场合等，对电磁屏蔽抗干扰好。

产品结构:

导体：多股精绞无氧铜丝或镀锡铜丝。
绝缘：特殊混合PVC
颜色：≤0.5mm颜色表示
≥0.5mm黑色数字白色号码编号，3芯以上带有黄绿接地线
内护套：改性低粘度强力挤压内护套，PVC材质，耐油。
编织：镀锡铜丝编织，密度在80%以上。
外护套：混合70度PVC

技术参数:

执行标准：JB/T8734、GB/T5023
额定电压：300/500V、450/750V
额定温度：70°C
最小弯曲半径：
移动安装：15X电缆外径
固定安装：4X电缆外径

使用温度范围：
移动安装：-10°C-70°C
固定安装：-30°C-70°C

Application:

The flexible shielded control cable works as control and connection cable. It is applied in machine tools, plant and appliance construction, heating, air conditioning and ventilation technology as well as for other applications in electrical equipment especially where a greater electromagnetic compatibility is required.

Product structure:

Conductor: strands of stranded oxygen-free copper or tinned copper
Insulation: Special PVC
Color: ≤0.5mm color signed
≥0.5mm Black color number with white series number, if more than 3 cores will have yellow and green earth wire
Inner sheath: special PVC, oil resistance
Shield: tinned copper braiding, density: above 80%
Out sheath: Mixed 70 degrees PVC

Technical Parameters:

Implementation of standards : JB/T8734、GB/T5023
Rated voltage:300/500V、450/750V
Rated temperature:70°C
Minimum Bending radius: The working temperature:
Fixing Installation:15Xouter diameter Fixing Installation: -10°C-70°C
Fixed Installation:4Xouter diameter Fixed Installation: -30°C-70°C

型号规格: Specification:

型号 style	截面积 cross-section	生产芯数 Produced number of cores	绝缘颜色 Insulation color	导体电阻(Ω/KM) Conductor electrical resistance:
RVVP	0.5mm²	2-36	1、颜色区分	39
RVVP	0.75mm²	2-32		26
RVVP	1.0mm²	2-20	2、编码区分	19.5
RVVP	1.5mm²	2-10		13.3
RVVP	2.0mm²	2-8		7.98

注明：可根据使用场合选择单护套或双护套电缆，包装长度及护套颜色均可依客户要求定制。具体参数以产品规格书为准。

Note: You can select a single or double-sheathed cable according to applications Package and Cable Color can be customized according to the customer requirements. Detailed parameter please checks the specification



应用范围:

带有双重镀锡铜网屏蔽效果，作为测量、监测和控制电缆适合用在机床制造、成套设备安装工程、电站、暖气和空调系统、冷冻设备、办公自动设备、以及数据处理系统等场合。耐热阻燃，绝缘性能优异，化学性能稳定。

产品结构:

导体：多股精绞无氧铜丝或镀锡铜丝。
绝缘：特殊硬质耐热阻燃PVC/TPE（对绞线采用PE/TPE）
颜色：颜色表示，黑色数字编号。
内屏蔽：线对铝箔麦拉绕包，镀锡铜丝编织。
排流线：与导体同规格
编织：裸铜或镀锡铜丝编织，密度在80%以上。
护套：混合80度耐热阻燃PVC护套，通过VW-1阻燃试验

技术参数:

执行标准：UL758
额定电压：600/1000V
额定温度：70°C
最小弯曲半径：
移动安装：10X电缆外径
固定安装：4X电缆外径

使用温度范围：
移动安装：-10°C-70°C
固定安装：-40°C-70°C

Application:

With double tinned copper shielded effect ion, as measuring, detecting and control cable, it is used in machine tool manufacture, complete equipment installation engineering, power station, heating and air-condition system, refrigeration unit, office auto-equipment and related DP system. This Cable is heat retardant, excellent insulation properties, chemical stability.

Product structure:

Conductor: strands of stranded oxygen-free copper or tinned copper
Insulation: Specid hard hot and flame retardant PVC/TPE (Pairs PE/TPE)
Color: color signed, Black number series number
Inner shield: aluminum foil packed shield and tinned copper shield
Drain wire: the same specification as conductor
Shield: Bare copper or tinned copper braiding, density≥80%
Sheath: PVC/PUR 80°C heat and flame resistance, passed VW-1 flame resistance test

Technical Parameters:

Implementation of the standards:UL758
Rated voltage:600/1000V
Rated temperature:70°C
Minimum Bending radius: The working temperature:
Fixing Installation:10Xouter diameter Fixing Installation: -10°C-70°C
Fixed Installation:4Xouter diameter Fixed Installation: -40°C-70°C

型号规格: Specification:

名称 name	芯数及截面积(mm²) cores and cross-section	近似外径(mm) External Diameter	近似重量 (KG/KM)weight
对屏蔽的控制对线	(4G0.75+(2X0.5)C)C	11	172
对屏蔽的控制对线	(4G1.5+(2X1.0)C)C	13.8	250
对屏蔽的控制对线	(4G0.75+2X(2X0.34)C)C	11.5	160
对屏蔽的控制对线	(4G1.0+2X(2X0.75)C)C	12	295
对带屏蔽的四星式控制对线	(4G2.5+(4X0.5)C)C	13	258
不带控制对线	(4G1.5)C	9.8	156
不带控制对线	(4G2.5)C	11.8	237

注明：可根据使用场合选择适用型号电缆，包装长度及护套颜色均可依客户要求定制。具体参数以产品规格书为准。

Note: You can select cable according to applications Package and Cable Color can be customized according to the customer requirements. Detailed parameter please checks the specification

SINGI WIRE AND CABLE



应用范围:

适用于干燥和严重潮湿的环境下一般机械需求的固定安装和柔性使用电缆,如机器人和工业化工厂的构造,自动化技术,控制和生产工程,机器人和电机构造,驱动系统等场合。耐酸、碱、溶剂、液压油等抗性。

Application:

Can be fixed installation and flexibility, for example in a dry, wet and severe wet room has a general demand for machines and industrial mechanical construction of chemical plants, such as automation, control and production engineering, Robotics and industrial chemical structure of the motor structure, a drive system. Resistant high-strength acids, bases, solvents, hydraulic oil.

产品结构:

导体:多股精绞无氧铜丝或镀锡铜丝。
绝缘:特殊硬质PVC、TPE
颜色:颜色表示,黑色数字编号。
隔离层:铝箔麦拉或无纺布包裹
编织:裸铜或镀锡铜丝编织,密度在80%以上。
护套:特殊改性PVC、TPE

Product structure:

Conductor: strands of stranded oxygen-free copper or tinned copper
Insulation: Special hard PVC、TPE
Color: color signed, black number serial number
Isolation layer: Aluminum Mylar foil or non-woven tape
Shield: tinned copper braiding, density: above 80%
Sheath: special PVC、TPE

技术参数:

执行标准:JB/T8734.2
额定电压:600/1000V
额定温度:70°C
最小弯曲半径:
移动安装:10X电缆外径
固定安装:4X电缆外径

使用温度范围:
移动安装:-10°C-70°C
固定安装:-40°C-70°C

Technical Parameters:

Implementation of standards: JB/T8734.2
Rated voltage:600/1000V
Rated temperature:70°C
Minimum Bending radius:
Fixing Installation:10Xouter diameter
Fixed Installation:4Xouter diameter

The working temperature:
Fixing Installation:-10°C-70°C
Fixed Installation:-40°C-70°C

型号规格: Specification:

芯数*截面积 number of cores X cross-section	PVC外径(mm) PVC diameter	TPE外径(mm) TPE diameter	PVC重量(KG/KM) PVC weight	TPE重量(KG/KM) TPE weight
4*1.5mm ²	9.3	8.3	125	102
4*2.5mm ²	11.1	10.7	191	160
4*4.0mm ²	12.9	12.4	268	247
4*6.0mm ²	14.7	14.1	356	351
4*10mm ²	18.5	17.4	601	552

注明:可根据使用场合选择适用型号电缆,包装长度及护套颜色均可依客户要求定制。具体参数以产品规格书为准。

Note: You can select cable according to applications Package and Cable Color can be customized according to the customer requirements. Detailed parameter please checks the specification.

SINGI WIRE AND CABLE



应用范围:

干燥或潮湿的场合,特别是车辆电器及仪表线路的安装及固定敷设用线。采用的绝缘材料具有优良的耐溶剂和耐油性能,并具有相应温度等级的耐热性能。

Application:

Using dry or wet situations, especially fixed vehicle installation and electrical and instrumentation lines laying cable. Insulating materials have excellent solvent and oil resistance, and have the appropriate temperature level of heat resistance.

产品结构:

导体:多股精绞无氧铜丝或镀锡铜丝。
绝缘:105°C阻燃PVC
颜色:任意色

Product structure:

Conductor: strands of stranded oxygen-free copper or tinned copper
Insulation: 105 °C flame-retardant PVC
Color: any color

技术参数:

执行标准:GB9238-88
耐压测试:2.5KV
额定温度:105°C
70°C时的绝缘电阻≥109Ω.m体积电阻率

Technical Parameters:

Implementation of standards: GB9238-88
Pressure test: 2.5KV
Rated temperature: 105°C
Insulation resistance at 70 °Cf ≥ 109Ω.m

型号规格: Specification:

型号 style	规格 specification	导体结构(mm) conductor structure	绝缘直径(mm) insulation diameter	导体电阻(Ω/KM) Conductor electrical resistance:
QVR	0.2mm ²	12/0.15	1.24	92.3
QVR	0.3mm ²	16/0.15	1.35	69.2
QVR	0.5mm ²	16/0.2	2.2	39
QVR	0.75mm ²	24/0.2	2.5	26
QVR	1.0mm ²	32/0.2	2.6	16.8
QVR	1.5mm ²	30/0.25	3.0	13.3
QVR	2.5mm ²	49/0.25	3.8	7.98
QVR	4mm ²	56/0.3	4.6	4.95
QVR	6mm ²	84/0.3	5.2	3.3

注明:镀锡铜导体电缆需定制,包装长度及绝缘色均可依客户要求定制。具体参数以产品规格书为准。

Note: Tinned copper conductor cable can be customized. Package and Cable Color can be customized according to the customer requirements. Detailed parameter please checks the specification.

SINGI WIRE AND CABLE



应用范围:

应用于不同工业领域的连接电缆，如工业机器人，厂房和机床的制造，适用于中等机械应力，特别是摩擦，高柔性抗扭力，同时在没有拉力的负载下，可自由的弯曲运动，这类电缆可应用于因结构而不能使用拖链的场所，还可适用于低温，干燥和潮湿的室内及无防护场所。

Application:

Used in different industrial areas connecting cables, such as industrial robots, Plant and machine manufacturing. These cables are suitable for medium mechanical stress. In particular friction, highly flexible tensional stresses, while the profit without pulling load, These cables can be freely bending motion, can't be used in towline environment because of different structure, can also be used in low temperature, dry and very humid room and unprotected places.

产品结构:

导体：多股超细精绞无氧铜丝或镀锡铜丝。
绝缘：特殊混合PVC
颜色：≤0.5mm颜色表示
≥0.5mm黑色数字白色号码编号，3芯以上带有黄绿接地线
芯线：一般绞合间隙填充或双绞分组间隙填充。
内衬层：分层处理，聚脂带或无纺布包裹缓冲。
护套：特殊改性PVC、聚氨酯PUR（可选）。

Product structure:

Conductor: strands of thin stranded oxygen-free copper or tinned copper
Insulation: Special mix PVC
Color: ≤0.5mm color signed
≥0.5mm Black color number with white series number, if more than 3 cores will have yellow and green earth wire
Inner Liner: hierarchical processing, polyester tape or non-woven wrap buffer
Jacket: special modified PVC, polyurethane PUR (optional).

技术参数:

额定电压：300/300V、300/500V
最小弯曲半径：
移动安装：15X电缆外径
固定安装：5X电缆外径

使用温度范围：
移动安装：-5°C-90°C
固定安装：-30°C-90°C

Technical Parameters:

Rated voltage:300/300V、300/500V
Minimum Bending radius:
Fixing Installation:15Xouter diameter
Fixed Installation:5Xouter diameter

The working temperature:
Fixing Installation:-5°C-90°C
Fixed Installation:-30°C-90°C

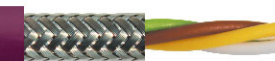
型号规格: Specification:

型号 style	截面积 cross-section	生产芯数 Produced number of cores	绝缘颜色 Insulation color	导体电阻(Ω/KM) Conductor electrical resistance:
TRVV	0.14mm ²	2-38		135
TRVV	0.25mm ²	2-38	1、颜色区分	81
TRVV	0.34mm ²	2-38		65
TRVV	0.5mm ²	2-38	2、编码区分	39
TRVV	0.75mm ²	2-38		26
TRVV	1.0mm ²	2-36		19.5

注明：包装长度及护套颜色均可依客户要求定制。具体参数以产品规格书为准。

Note: Package and Cable Color can be customized according to the customer requirements. Detailed parameter please checks the specification.

SINGI WIRE AND CABLE



应用范围:

应用于不同工业领域的连接电缆，如工业机器人，厂房和机床的制造，适用于中等机械应力，特别是摩擦，高柔性抗扭力，同时在没有拉力的负载下，可自由的弯曲运动，这类电缆可应用于因结构而不能使用拖链的场所，还可适用于低温，干燥和潮湿的室内及无防护场所，对电磁屏蔽抗干扰好。

Application:

Used in different industrial areas connecting cables, such as industrial robots, Plant and machine manufacturing. These cables are suitable for medium mechanical stress. In particular friction, highly flexible tensional stresses, while the profit without pulling load, These cables can be freely bending motion, can't not be used in towline environment because of different structure, can also be used in low temperature, dry and very humid room and unprotected places.

产品结构:

导体：多股超细精绞无氧铜丝或镀锡铜丝。
绝缘：特殊混合PVC
颜色：≤0.5mm颜色表示
≥0.5mm黑色数字白色号码编号，3芯以上带有黄绿接地线
芯线：一般绞合间隙填充或双绞分组间隙填充。
内衬层：分层处理，聚脂带或无纺布包裹缓冲
分屏蔽：线对裸铜丝或镀锡铜丝编织，组合后再加无纺布包裹。
总屏蔽：裸铜丝或镀锡铜丝编织，密度在80%以上。
护套：特殊改性PVC、聚氨酯PUR（可选）。

Product structure:

Conductor: strands of thin stranded oxygen-free copper or tinned copper
Insulation: Special mix PVC
Color: ≤0.5mm color signed
≥0.5mm Black color number with white series number, if more than 3 cores will have yellow and green earth wire
Inner Liner: hierarchical processing, polyester tape or non-woven wrap buffer
Shield: bare copper or tinned copper braiding, then non-woven wrap buffer
Total shield: bare copper or tinned copper braiding, Density of more than 80%
Jacket: special modified PVC, polyurethane PUR (optional).

技术参数:

额定电压：300/300V、300/500V
最小弯曲半径：
移动安装：15X电缆外径
固定安装：5X电缆外径

使用温度范围：
移动安装：-5°C-90°C
固定安装：-30°C-90°C

Technical Parameters:

Rated voltage:300/300V、300/500V
Minimum Bending radius:
Fixing Installation:15Xouter diameter
Fixed Installation:5Xouter diameter

The working temperature:
Fixing Installation:-5°C-90°C
Fixed Installation:-30°C-90°C

型号规格: Specification:

型号 style	截面积 cross-section	生产芯数 Produced number of cores	绝缘颜色 Insulation color	导体电阻(Ω/KM) Conductor electrical resistance:
TRVVP	0.14mm ²	2-38		135
TRVVP	0.25mm ²	2-38	1、颜色区分	81
TRVVP	0.34mm ²	2-38		65
TRVVP	0.5mm ²	2-38	2、编码区分	39
TRVVP	0.75mm ²	2-38		26
TRVVP	1.0mm ²	2-36		19.5

注明：包装长度及护套颜色均可依客户要求定制。具体参数以产品规格书为准。

Note: Package and Cable Color can be customized according to the customer requirements. Detailed parameter please checks the specification.



应用范围:

适用于连续往复运动下的安装，工业使用环境下的频繁弯曲场合，如现代化机械标准部件中的拖链系统。数控机床、机械（人）手、重型机器厂、起重运输设备、机械自动化系统等场合。具有优异的防水性、耐油、耐寒、耐磨和具有承受外部冲击的能力。

Application:

The cable used for new installation under reciprocating motion, especially the industrial environment of frequent bending occasions, such as in the drag chain of modern mechanical standard parts, machine tools, mechanical hand (people), heavy machinery, and other machinery automation systems occasion. Good for electromagnetic interference shielding. Have excellent water resistance, oil resistance, cold resistance, wear resistance and ability to withstand external shocks.

产品结构:

导体：多股超细精绞无氧铜丝或镀锡铜丝。
绝缘：特殊混合PVC
颜色：≤0.5mm颜色表示
≥0.5mm黑色数字白色号码编号，3芯以上带有黄绿接地线
芯线：一般绞合间隙填充和双绞分组间隙填充。
护套：特殊改性PVC

Product structure:

Conductor: Strands of bare copper or tinned copper
Insulation: Special PVC
Color: ≤0.5mm color signed
≥0.5mm black number with white series number, if more 3 cores, will have yellow and green earth cables
Sheath: special modified PVC

技术参数:

额定电压：300/300V、300/500V
最小弯曲半径：使用温度范围：
移动安装：10X电缆外径 移动安装：-5°C-90°C
固定安装：5X电缆外径 固定安装：-30°C-90°C
弯曲寿命：50次/分钟，大于500万次

Technical Parameters:

Rated voltage:300/300V、300/500V
Minimum Bending radius: The working temperature:
Fixing Installation:10Xouter diameter Fixing Installation: -5°C-90°C
Fixed Installation:5Xouter diameter Fixed Installation: -30°C-90°C
Bending life: 50 beats / min, more than 500 million times

型号规格: Specification:

型号 style	截面积 cross-section	生产芯数 Produced number of cores	绝缘颜色 Insulation color	导体电阻(Ω/KM) Conductor electrical resistance:
TRVV/S	0.2mm ²	2-36	1、颜色区分	92.3
TRVV/S	0.3mm ²	2-36		69.2
TRVV/S	0.5mm ²	2-36	2、编码区分	39
TRVV/S	0.75mm ²	2-32		26
TRVV/S	1.0mm ²	2-30		19.2
TRVV/S	1.5mm ²	2-24		13.3

注明：可根据使用场合选择TRVV或TRVVS带双绞电缆，包装长度及护套颜色均可依客户要求定制。具体参数以产品规格书为准。

Note: Choose TRVV or TRVVS according to applications Tinned Copper Conductor needs to be customized; Package and Cable Color can be customized according to the customer requirements. Detailed parameter please checks the specification.



应用范围:

适用于连续往复运动下的安装，工业使用环境下的频繁弯曲场合，如现代化机械标准部件中的拖链系统。数控机床、机械（人）手、重型机器厂、起重运输设备、机械自动化系统等场合，对电磁屏蔽抗干扰好。具有优异的防水性、耐油、耐寒、耐磨和具有承受外部冲击的能力。

Application:

The cable used for new installation under reciprocating motion, especially the industrial environment of frequent bending occasions, such as in the drag chain of modern mechanical standard parts, machine tools, mechanical hand (people), heavy machinery, and other machinery automation systems occasion. Good for electromagnetic interference shielding. Have excellent water resistance, oil resistance, cold resistance, wear resistance and ability to withstand external shocks.

产品结构:

导体：多股超细精绞无氧铜丝或镀锡铜丝。
绝缘：特殊混合PVC
颜色：≤0.5mm颜色表示
≥0.5mm黑色数字白色号码编号，3芯以上带有黄绿接地线
芯线：一般绞合间隙填充和双绞分组间隙填充。
内衬层：PP带或无纺布包裹缓冲
屏蔽：裸铜丝或镀锡铜丝编织，密度在80%以上。
护套：特殊改性PVC

Product structure:

Conductor: Strands of bare copper or tinned copper
Insulation: Special PVC
Color: ≤0.5mm color signed
≥0.5mm black number with white series number, if more 3 cores, will have yellow and green earth cables
Inner liner: PP tape or non-woven for buffer
Shield: Bare copper or tinned copper braiding, density ≥80%
Sheath: special modified PVC

技术参数:

额定电压：300/300V、300/500V
最小弯曲半径：使用温度范围：
移动安装：10X电缆外径 移动安装：-5°C-90°C
固定安装：5X电缆外径 固定安装：-30°C-90°C
弯曲寿命：50次/分钟，大于500万次

Technical Parameters:

Rated voltage:300/300V、300/500V
Minimum Bending radius: The working temperature:
Fixing Installation:10Xouter diameter Fixing Installation: -5°C-90°C
Fixed Installation:5Xouter diameter Fixed Installation: -30°C-90°C
Bending life: 50 beats / min, more than 500 million times

型号规格: Specification:

型号 style	截面积 cross-section	生产芯数 Produced number of cores	绝缘颜色 Insulation color	导体电阻(Ω/KM) Conductor electrical resistance:
TRVVP/S	0.2mm ²	2-38	1、颜色区分	92.3
TRVVP/S	0.3mm ²	2-38		69.2
TRVVP/S	0.5mm ²	2-36	2、编码区分	39
TRVVP/S	0.75mm ²	2-32		26
TRVVP/S	1.0mm ²	2-30		19.2

注明：可根据使用场合选择TRVVP或TRVSP带双绞电缆，包装长度及护套颜色均可依客户要求定制。具体参数以产品规格书为准。

Note: Choose TRVVP or TRVSP according to applications Tinned Copper Conductor needs to be customized; Package and Cable Color can be customized according to the customer requirements. Detailed parameter please checks the specification.

SINGI WIRE AND CABLE



应用范围:

适用于连续往复运动下的安装,工业使用环境下的频繁弯曲场合,如现代化机械标准部件中的拖链系统。数控机床、机械(人)手、重型机器厂、起重运输设备、机械自动化系统等场合,对电磁屏蔽抗干扰好。具有优异的防水性、耐油、耐寒、耐磨和具有承受外部冲击的能力。

Application:

The cable used for new installation under reciprocating motion, especially the industrial environment of frequent bending occasions, such as in the drag chain of modern mechanical standard parts, machine tools, mechanical hand (people), heavy machinery, and other machinery automation systems occasion. Good for electromagnetic interference shielding. Have excellent water resistance, oil resistance, cold resistance, wear resistance and ability to withstand external shocks.

产品结构:

导体:多股超细精绞无氧铜丝或镀锡铜丝。
绝缘:特殊混合PVC
颜色:≤0.5mm颜色表示
≥0.5mm黑色数字白色号码编号,3芯以上带有黄绿接地线
芯线:一般绞合间隙填充和双绞分组间隙填充。
内护套:改性低粘度强力挤压内护套,PVC材质,耐油。
屏蔽:裸铜丝或镀锡铜丝编织,密度在80%以上。
外护套:特殊改性PVC

Product structure:

Conductor: Strands of bare copper or tinned copper
Insulation: Special PVC
Color: ≤0.5mm color signed
≥0.5mm black number with white series number, if more 3 cores, will have yellow and green earth cables
Inner sheath: modified low viscosity strong squeeze inner sheath, PVC, oil resistance
Shield: Bare copper or tinned copper braiding, density ≥80%
Sheath: special modified PVC

技术参数:

额定电压:300/300V、300/500V
最小弯曲半径: 使用温度范围:
移动安装:10X电缆外径 移动安装:-5°C-90°C
固定安装:5X电缆外径 固定安装:-30°C-90°C
弯曲寿命:50次/分钟,大于500万次

Technical Parameters:

Rated voltage:300/300V、300/500V
Minimum Bending radius: The working temperature:
Fixing Installation:10Xouter diameter Fixing Installation:-5°C-90°C
Fixed Installation:5Xouter diameter Fixed Installation:-30°C-90°C
Bending life: 50 beats / min, more than 500 million times

型号规格: Specification:

型号 style	截面积 cross-section	生产芯数 Produced number of cores	绝缘颜色 Insulation color	导体电阻(Ω/KM) Conductor electrical resistance:
TRVVP/S	0.2mm ²	2-38		92.3
TRVVP/S	0.3mm ²	2-38	1、颜色区分	69.2
TRVVP/S	0.5mm ²	2-36		39
TRVVP/S	0.75mm ²	2-32	2、编码区分	26
TRVVP/S	1.0mm ²	2-30		19.2

注明:可根据使用场合选择TRVVP或TRVVP带双绞电缆,包装长度及护套颜色均可依客户要求定制。具体参数以产品规格书为准。

Note: Choose TRVVP or TRVVP according to applications Tinned Copper Conductor needs to be customized; Package and Cable Color can be customized according to the customer requirements. Detailed parameter please checks the specification.

SINGI WIRE AND CABLE



应用范围:

适用于连续往复运动下的安装,工业使用环境下的频繁弯曲场合,如现代化机械标准部件中的拖链系统。数控机床、机械(人)手、重型机器厂、起重运输设备、机械自动化系统等场合。具有优异的防水性、耐油、耐寒、耐磨和具有承受外部冲击的能力。

Application:

The cable used for new installation under reciprocating motion, especially the industrial environment of frequent bending occasions, such as in the drag chain of modern mechanical standard parts, machine tools, mechanical hand (people), heavy machinery, and other machinery automation systems occasion. Good for electromagnetic interference shielding. Have excellent water resistance, oil resistance, cold resistance, wear resistance and ability to withstand external shocks.

产品结构:

导体:多股超细精绞无氧铜丝或镀锡铜丝。
绝缘:特殊混合PVC
颜色:≤0.5mm颜色表示
≥0.5mm黑色数字白色号码编号,3芯以上带有黄绿接地线
芯线:一般绞合间隙填充和双绞分组间隙填充。
内衬层:PP带或无纺
护套:聚氨酯(PUR)

Product structure:

Conductor: Strands of bare copper or tinned copper
Insulation: Special PVC
Color: ≤0.5mm color signed
≥0.5mm black number with white series number, if more 3 cores, will have yellow and green earth cables
Inner liner: PP tape or non-woven for buffer
Sheath: PUR

技术参数:

额定电压:300/300V、300/500V
最小弯曲半径: 使用温度范围:
移动安装:10X电缆外径 移动安装:-30°C-90°C
固定安装:5X电缆外径 固定安装:-50°C-90°C
弯曲寿命:45次/分钟,大于600万次

Technical Parameters:

Rated voltage:300/300V、300/500V
Minimum Bending radius: The working temperature:
Fixing Installation:10Xouter diameter Fixing Installation:-30°C-90°C
Fixed Installation:5Xouter diameter Fixed Installation:-50°C-90°C
Bending life: 45 beats / min, more than 600 million times

型号规格: Specification:

型号 style	截面积 cross-section	生产芯数 Produced number of cores	绝缘颜色 Insulation color	导体电阻(Ω/KM) Conductor electrical resistance:
TRVV/S	0.2mm ²	2-38		92.3
TRVV/S	0.3mm ²	2-38	1、颜色区分	69.2
TRVV/S	0.5mm ²	2-36		39
TRVV/S	0.75mm ²	2-32	2、编码区分	26
TRVV/S	1.0mm ²	2-30		19.2

注明:可根据使用场合选择TRVV或TRVVS带双绞电缆,包装长度及护套颜色均可依客户要求定制。具体参数以产品规格书为准。

Note: Choose TRVV or TRVVS according to applications Tinned Copper Conductor needs to be customized; Package and Cable Color can be customized according to the customer requirements. Detailed parameter please checks the specification.

SINGI WIRE AND CABLE

应用范围:

适用于连续往复运动下的安装，工业使用环境下的频繁弯曲场合，如现代化机械标准部件中的拖链系统。数控机床、机械（人）手、重型机器厂、起重运输设备、机械自动化系统等场合，对电磁屏蔽抗干扰好。具有优异的防水性、耐油、耐寒、耐磨和具有承受外部冲击的能力。

Application:

The cable used for new installation under reciprocating motion, especially the industrial environment of frequent bending occasions, such as in the drag chain of modern mechanical standard parts, machine tools, mechanical hand (people), heavy machinery, and other machinery automation systems occasion. Good for electromagnetic interference shielding. Have excellent water resistance, oil resistance, cold resistance, wear resistance and ability to withstand external shocks.

产品结构:

导体：多股超细精绞无氧铜丝或镀锡铜丝。
绝缘：特殊混合PVC
颜色：≤0.5mm颜色表明
≥0.5mm黑色数字白色号码编号，3芯以上带有黄绿接地线
芯线：一般绞合间隙填充和双绞分组间隙填充。
内衬层：PP带或无纺布包裹缓冲
屏蔽：裸铜丝或镀锡铜丝编织，密度在80%以上。
护套：聚氨酯PUR

Product structure:

Conductor: Strands of bare copper or tinned copper
Insulation: Special PVC
Color: ≤0.5mm color signed
≥0.5mm black number with white series number, if more 3 cores, will have yellow and green earth cables
Inner liner: PP tape or non-woven for buffer
Shield: Bare copper or tinned copper braiding, density ≥80%
Sheath: PUR

技术参数:

额定电压：300/300V、300/500V
最小弯曲半径：
移动安装：10X电缆外径
固定安装：5X电缆外径
弯曲寿命：45次/分钟，大于600万次

Technical Parameters:

Rated voltage: 300/300V、300/500V
Minimum Bending radius: The working temperature:
Fixing Installation: 10X outer diameter
Fixed Installation: 5X outer diameter
Bending life: 45 beats / min, more than 600 million times

型号规格: Specification:

型号 style	截面积 cross-section	生产芯数 Produced number of cores	绝缘颜色 Insulation color	导体电阻(Ω/KM) Conductor electrical resistance:
TRVVP/S	0.2mm ²	2-38		92.3
TRVVP/S	0.3mm ²	2-38		69.2
TRVVP/S	0.5mm ²	2-36	1、颜色区分	39
TRVVP/S	0.75mm ²	2-32		26
TRVVP/S	1.0mm ²	2-30	2、编码区分	19.2

注明：可根据使用场合选择TRVVP或TRVVSP带双绞电缆，包装长度及护套颜色均可依客户要求定制。具体参数以产品规格书为准。

Note: Choose TRVVP or TRVVSP according to applications Tinned Copper Conductor needs to be customized; Package and Cable Color can be customized according to the customer requirements. Detailed parameter please checks the specification.





应用范围:

电梯控制电缆可在悬挂长度较长的情况下提供整体电气控制，同时承受机械应力。电梯电缆因采用钢丝承载缆芯，可用于长距离悬挂使用场合。该款电缆采用特殊结构设计，使用寿命长，最大限度提高电梯生产企业的效率。圆形电缆特别为电梯内部并道RS485通讯设备的连接用软线而设计，保证精确的脉冲信号。

产品结构:

导体：多股超细精绞无氧铜丝。
绝缘：特殊混合PVC
颜色：颜色表示，黑色数字白色号码编号
芯线：电梯控制线、电梯网线、电梯视频线、电梯电源+网络组合线（可选）
屏蔽：裸铜丝或镀锡铜丝编织，密度在80%以上。
加强件：高强度镀锌航空钢丝
护套：耐寒专用PVC

技术参数:

执行标准：GB/T5023、IEC60227-6、En50214
额定温度：70°C
型号表示：T：电梯，V：聚氯乙烯绝缘，V：聚氯乙烯护套
B：扁形，P：屏蔽结构，G：钢丝加强件 TV：视频传输线

型号规格: Specification:

产品名称 mane	型号 style	规格 specification	加强件 steel rope	电缆形状 shape
电梯网线 Elevator LAN Cable	TVVB2G SFTP	SFTP CAT5E	2根钢丝 two steel rope	扁形 flat
电梯电源+网线 Elevator power + Network combo cable	TVVB2G 2*1.0+SFTP	RVV 2*1.0+SFTP CAT5E	2根钢丝 two steel rope	扁形 flat
电梯视频线 Elevator Video Cable	TVVB2G SYV	SYV75-5	2根钢丝 two steel rope	扁形 flat
电梯电源+视频 Elevator Power and Video Cable	TVVB2G 2*1.0+SYV	RVV 2*1.0+SYV75-5	2根钢丝 two steel rope	扁形 flat
电梯控制线 Control cable for Elevator	TVV 1.5平方	6-30芯	无 no	圆形 round
电梯控制线 Control cable for Elevator	TVV 2.5平方	6-30芯	无 no	圆形 round

注明：可根据使用场合选择适用的具体型号电缆，包装长度及护套颜色均可依客户要求定制。具体参数以产品规格书为准。
Note: You can select cable according to applications Package and Cable Color can be customized according to the customer requirements. Detailed parameter please checks the specification.



应用范围:

该款电缆采用特殊结构设计，可作为动力及控制电缆安装在轨道、起重机、行吊、物流运输、机械自动化系统等场合。电缆采用新型耐寒、阻燃、柔性专用护套料，具有良好的柔软弯曲性，可在-15°C低温下仍保持柔软。

产品结构:

导体：多股超细精绞无氧铜丝。
绝缘：特殊混合PVC，耐油、阻燃
颜色：颜色表示，黑色数字白色号码编号
芯线：一字排列或梅花纹型排列，芯线以承载缆芯（麻绳）为中心绞合成缆。
内衬层：PP带、铝箔麦拉或无纺布缓冲
护套：耐寒专用PVC

技术参数:

执行标准：GB/T5023.6、60227 IEC 71C(TVV)
额定电压：450/750V
最小弯曲半径：
移动安装：6X电缆外径
使用温度范围：
固定安装：-40°C-70°C

型号规格: Specification:

型号 style	截面积 cross-section	生产芯数 Produced number of cores	绝缘颜色 Insulation color	导体电阻(Ω/KM) Conductor electrical resistance:
TVVB	0.75mm ²	2-66		26
TVVB	1.0mm ²	3-60	1、颜色区分	19.2
TVVB	1.5mm ²	3-12		13.3
TVVB	2.5mm ²	3-12	2、编码区分	7.98
TVVB	4.0mm ²	4-5		4.95

注明：24芯以上电缆芯线为梅花纹型，可根据使用场合定制芯线平行或梅花纹型电缆。包装长度及护套颜色均可依客户要求定制。具体参数以产品规格书为准。

Note: More than 24 cores cable is twisted plum; plum may be parallel or twisted cable according to applications. Package and Cable Color can be customized according to the customer requirements. Detailed parameter please checks the specification.

Application:

This cable adopt special design, it can be used as power and control cables installed in the track, crane, line hanging, logistics and transportation, machinery automation systems and other occasions. Cable adopt the new cold, fire-retardant, flexible special sheathing material, has good flexibility bending, it can remain soft at -15 °C low temperature.

Product structure:

Conductor: Fine strands of oxygen-free copper
Insulation: special mix PVC, oil resistant, flame retardant
Color: color signed, Black number with white series number
Inner Liner: PP tape, Mylar foil or non-woven for buffer
Sheath: special PVC

Technical Parameters:

Implementation of standards : GB/T5023.6、60227 IEC 71C(TVV)
Rated voltage:450/750V
Minimum Bending radius: The working temperature:
Fixing Installation:6Xouter diameter Fixing Installation:-40°C-70°C

SINGI WIRE AND CABLE

应用范围:

该电缆采用特殊结构设计, 可作为动力及控制电缆安装在轨道, 起重机, 物流运输等场合。采用新型耐油柔性专用外护套, 可在-15°C低温下仍保持柔软, 阻燃。

Application:

As connecting and control cable for cranes and conveyors, it is suitable for the places of railway stations, crane and other related situations. It is suitable as a control and connection cable for cranes and dockyards where operating conditions on building sites, container goods railway stations and dockyards where operating conditions are rough. Sheath: special polychloreprene (Butadiene-acrylonitrile rubber), it remains flexible at -15°C, flame resistance and self-extinguishing.

产品结构:

导体: 多股超细精绞无氧铜丝。
绝缘: 特殊混合PVC
颜色: 颜色表示, 黑色数字白色号码编号
芯线: 一字排列, 梅花排列。
加强件: 高强度镀锌航空钢丝 (可选)
护套: 耐油、阻燃、弹性PVC

Product structure:

Conductor: strands of oxygen-free bare copper
Insulation: special mix PVC
Color: color signed, Black number with white series number
Core: parallel, plum arrangement.
Bending: steel rope
Sheath: Butadiene-acrylonitrile rubber, resistant to oil, flame retardant and self-extinguishing

技术参数:

起重电缆是一字型排列时:
1、自由使用长度大于35m;
2、运行速度大于1.6m/s;
应考虑在电缆中增加承力元件, 承力元件一般为镀锌软钢丝绳或纤维绳如芳纶纱等。
起重电缆是梅花型绞合排列时:
1、自由使用长度大于80m;
2、运行速度大于4m/s-10m/s;
应考虑在电缆中增加承力元件, 承力元件一般为镀锌软钢丝绳。

Technical Parameters:

Technical data:
Rated voltage: ≤1.5mm 300/500V > 1.5mm:450/750V
Test voltage: ≤1.5mm 2500V > 1.5mm:3000V
Minimum bending radius: 0.3 < L < 0.6m
Burning vertically test: GB/T1 83880.1-2001, IEC60332-1:1993
test Passed standard :GB5023.6, IEC60227-6, EN50214.
Used under the normal conditions. The temperature of conductor is lower than 70°C
Temperature range: -15°C to +40°C
Cables are recommender for Installations where the suspended length doesn't exceed 80m: and the speed of travel does not exceed 4m/s.
If it more than this, with steel.

型号规格: Specification:

型号 style	截面积 cross-section	生产芯数 Produced number of cores	绝缘颜色 Insulation color	导体电阻(Ω/KM) Conductor electrical resistance:
YFFB/G	0.75mm ²	2-66		26
YFFB/G	0.82mm ²	2-66	1、颜色区分	22
YFFB/G	1.0mm ²	2-66		19.5
YFFB/G	1.5mm ²	2-60	2、编码区分	13.3

注明: YFFB代表不带钢丝, YFFBG代表带钢丝, 可根据使用场合选择适用的具体型号电缆, 包装长度及护套颜色均可依客户要求定制。具体参数以产品规格书为准。

Note: You can select cable according to applications Package and Cable Color can be customized according to the customer requirements. Detailed parameter please checks the specification.

SINGI WIRE AND CABLE

应用范围:

作为行车电动葫芦连接和控制电缆, 适用于干燥或潮湿的室内的各种电气安装。鉴于其特殊的柔性设计, 它还适用于无应力缓释可强制引导的左右非连续性运动下的安装或固定敷设。采用了改性PVC护套比一般橡胶材质更具有抗拉性和抗撕裂强度, 又保持柔软性。产品性能更佳, 使用更安全。

Application:

It is the control cable being used for cranes and other appliances in dry or wet environment (indoor). For its special flexibility, it also can be used for non-continuous installation or fixation, but cannot work as elevator cables. For the adoption of modified PVC sheath, the product has an excellent properties and safety service.

产品结构:

导体: 多股超细精绞无氧铜丝或镀锡铜丝。
绝缘: 特殊混合PVC
颜色: 颜色表示, 黑色数字白色号码编号。
芯线: 添加黄麻绳成缆, 无纺布包裹缓冲。
钢丝: 一根或两根无扭力自承钢丝, 承载运行中产生的张力
护套: 特殊混合PVC。

Product structure:

Conductor: Strands of bare copper or tinned copper
Insulation: Special PVC
Color: color signed, Black number with white series number
Steel rope: One or two self-supporting steel rope is used to carry tensile force in working
Sheath: special PVC

技术参数:

额定电压: 300/500V、450/750V
最小弯曲半径: 20倍电缆外径
使用温度范围: -15°C-70°C

Technical Parameters:

Rated voltage: 300/500V、450/750V
Minimum bending radius: 20Xouter diameter
The working temperature: -15°C-70°C

型号规格: Specification:

型号 style	截面积 cross-section	生产芯数 Produced number of cores	绝缘颜色 Insulation color	导体电阻(Ω/KM) Conductor electrical resistance:
RVV1G	0.75mm ²	3-38		26
RVV1G	1.0mm ²	3-38		19.5
RVV1G	1.5mm ²	3-38	1、颜色区分	13.3
RVV1G	2.5mm ²	3-38		7.98
RVV2G	0.75mm ²	3-38	2、编码区分	26
RVV2G	1.0mm ²	3-38		19.5
RVV2G	1.5mm ²	3-38		13.3
RVV2G	2.5mm ²	3-25		7.98

注明: RVV1G代表1根钢丝, RVV2G代表2根钢丝, 包装长度及护套颜色均可依客户要求定制。具体参数以产品规格书为准。

Note: RVV1G signed one steel rope; RVV2G signed two steel ropes Package and Cable Color can be customized according to the customer requirements. Detailed parameter please checks the specification.

SINGI Wire&cable

【中低压电缆】



www.singicable.com



SINGI

Low-voltage cable Series

信基中低压电缆系列 →



CE认证 UL认证 3C认证 足量足米 PC阻燃 环保材质

KVV型 铜导体聚氯乙烯绝缘聚氯乙烯护套控制电缆
KVV Copper conductor PVC Insulated PVC sheathed Control Cable



应用范围:

适用于交流额定电压450/750V及以下控制，敷设在室内、电缆沟、管道、直埋等固定的场合。控制、监控回路及保护线路，电器仪表、配电装置的信号传输、控制与测量的使用。

Application:

Suitable for AC rated voltage 450 / 750V and below , for laying indoors, cable trench, pipeline, buried and other fixed occasions. Control, monitor and protect the loop line, Electrical instrumentation, power distribution unit signal transmission, control and measurement used.

产品结构:

导体：无氧铜，单根硬导体
绝缘：PVC/A型聚氯乙烯
颜色：5芯以上采用黑色数字白色号码编号
内衬层：聚脂带或无纺布包裹缓冲
护套：PVC/ST5型聚氯乙烯

Product structure:

Conductor: oxygen-free copper, solid hard conductor
Insulation: PVC / A
Color: $\geq 0.5\text{mm}$ black number with white series number
Inner liner: Polyester tape or non-woven for buffer
Jacket: PVC/ST5

技术参数:

执行标准：GB/T9330.2
额定电压：450/750V
额定温度：70°C
最小弯曲半径：
移动安装：10X电缆外径
固定安装：6X电缆外径

使用温度范围：
移动安装：-5°C-70°C
固定安装：-10°C-70°C

Technical Parameters:

Implementation of standards : GB/T9330.2
Related Voltage: : 450/750V
Rated temperature : 70°C
Minimum Bending radius: The working temperature:
Fixing Installation:10Xouter diameter Fixing Installation: -5°C-70°C
Fixed Installation:6Xouter diameter Fixed Installation: -10°C-70°C

型号规格: Specification:

型号 style	截面积 cross-section	生产芯数 Produced number of cores	绝缘颜色 Insulation color	导体电阻(Ω/KM) Conductor electrical resistance:
KVV	0.75mm ²	2-32		26
KVV	1.0mm ²	2-30		19.2
KVV	1.5mm ²	2-24		13.3
KVV	2.5mm ²	2-20	1、颜色区分	7.98
KVV	4mm ²	2-18	2、编码区分	4.61
KVV	6mm ²	2-14		3.08
KVV	10mm ²	2-10		1.83

注明：包装长度及护套颜色均可依客户要求定制。具体参数以产品规格书为准。
Note: Package and Cable Color can be customized according to the customer requirements.
Detailed parameter please checks the specification.

KVVR型 铜导体聚氯乙烯绝缘聚氯乙烯护套控制软电缆
KVVR Copper conductor PVC Insulated PVC Sheathed Flexible Control Cable



应用范围:

适用于交流额定电压450/750V及以下控制，敷设在室内、电缆沟、管道、直埋等固定的场合。控制、监控回路及保护线路，电器仪表、配电装置的信号传输、控制与测量的使用。

Application:

Suitable for AC rated voltage 450 / 750V and below , for laying indoors, cable trench, pipeline, buried and other fixed occasions. Control, monitor and protect the loop line, Electrical instrumentation, power distribution unit signal transmission, control and measurement used.

产品结构:

导体：多股绞合型无氧铜，软导体
绝缘：PVC/A型聚氯乙烯
颜色：5芯以上采用黑色数字白色号码编号
内衬层：聚脂带或无纺布包裹缓冲
护套：PVC/ST5型聚氯乙烯

Product structure:

Conductor: strands of twisted oxygen-free copper, soft conductor
Insulation: PVC / A
Color: $\geq 0.5\text{mm}$ black number with white series number
Inner liner: Polyester tape or non-woven for buffer
Jacket: PVC/ST5

技术参数:

执行标准：GB/T9330.2
额定电压：450/750V
额定温度：70°C
最小弯曲半径：
移动安装：12X电缆外径
固定安装：6X电缆外径

使用温度范围：
移动安装：-5°C-70°C
固定安装：-10°C-70°C

Technical Parameters:

Implementation of standards : GB/T9330.2
Related Voltage: : 450/750V
Rated temperature : 70°C
Minimum Bending radius: The working temperature:
Fixing Installation:12Xouter diameter Fixing Installation: -5°C-70°C
Fixed Installation:6Xouter diameter Fixed Installation: -10°C-70°C

型号规格: Specification:

型号 style	截面积 cross-section	生产芯数 Produced number of cores	绝缘颜色 Insulation color	导体电阻(Ω/KM) Conductor electrical resistance:
KVVR	0.75mm ²	2-32		26
KVVR	1.0mm ²	2-30		19.2
KVVR	1.5mm ²	2-24		13.3
KVVR	2.5mm ²	2-20	1、颜色区分	7.98
KVVR	4mm ²	2-18	2、编码区分	4.61
KVVR	6mm ²	2-14		3.08
KVVR	10mm ²	2-10		1.83

注明：包装长度及护套颜色均可依客户要求定制。具体参数以产品规格书为准。
Note: Package and Cable Color can be customized according to the customer requirements.
Detailed parameter please checks the specification.

中低压电缆

中低压电缆



应用范围:

适用于交流额定电压450/750V及以下控制，敷设在室内、电缆沟、管道、直埋等固定的场合。控制、监控回路及保护线路，电器仪表、配电装置的信号传输、控制与测量的使用。该类产品具有较强的抗电磁干扰能力，适合用在要求屏蔽的固定场合。

Application:

This cable is suitable for AC rated voltage 450 / 750V and below, monitoring circuit and protection line and other occasions. For Lying indoors, cable trench, pipeline buried and other fixed occasions.

产品结构:

导体：无氧铜，单根硬导体
绝缘：PVC/A型聚氯乙烯
颜色：5芯以上采用黑色数字白色号码编号
内衬层：聚脂带或无纺布包裹缓冲
屏蔽：无氧铜丝编织
护套：PVC/ST5型聚氯乙烯

Product structure:

Conductor: Oxygen-free copper wire, solid hard conductor
Insulation: PVC / A
Color: ≥ 0.5 mm black number with white series number
Inner liner: Polyester tape or non-woven for buffer
Shield: Bare Copper braiding
Jacket: PVC/ST5

技术参数:

执行标准：GB/T9330.2
额定电压：450/750V
额定温度：70°C
最小弯曲半径：
移动安装：10X电缆外径
固定安装：6X电缆外径

使用温度范围:
移动安装：-5°C-70°C
固定安装：-10°C-70°C

Technical Parameters:

Implementation of standards : GB/T9330.2
Related Voltage: : 450/750V
Rated temperature : 70°C
Minimum Bending radius: **The working temperature:**
Fixing Installation:10Xouter diameter Fixing Installation: -5°C-70°C
Fixed Installation:6X outer diameter Fixed Installation: -10°C-70°C

型号规格: Specification:

型号 style	截面积 cross-section	生产芯数 Produced number of cores	绝缘颜色 Insulation color	导体电阻(Ω/KM) Conductor electrical resistance:
KVVP	0.75mm ²	2-30		26
KVVP	1.0mm ²	2-26		19.2
KVVP	1.5mm ²	2-20		13.3
KVVP	2.5mm ²	2-16	1、颜色区分	7.98
KVVP	4mm ²	2-14	2、编码区分	4.61
KVVP	6mm ²	2-12		3.08
KVVP	10mm ²	2-10		1.83

注明：包装长度及护套颜色均可依客户要求定制。具体参数以产品规格书为准。

Note: Package and Cable Color can be customized according to the customer requirements. Detailed parameter please checks the specification.



应用范围:

适用于交流额定电压450/750V及以下控制，敷设在室内、电缆沟、管道、直埋等固定的场合。控制、监控回路及保护线路，电器仪表、配电装置的信号传输、控制与测量的使用。该类产品具有较强的抗电磁干扰能力，适合用在要求屏蔽的固定场合。

Application:

Suitable for AC rated voltage 450 / 750V and below , for laying indoors, cable trench, pipeline, buried and other fixed occasions. Control, monitor and protect the loop line, Electrical instrumentation, power distribution unit signal transmission, control and measurement used. These products have a strong anti-electromagnetic interference capability, suitable for use in fixed places shielding requirements.

产品结构:

导体：多股绞合型无氧铜，软导体
绝缘：PVC/A型聚氯乙烯
颜色：5芯以上采用黑色数字白色号码编号
内衬层：聚脂带或无纺布包裹缓冲
屏蔽：无氧铜丝编织
护套：PVC/ST5型聚氯乙烯

Product structure:

Conductor: strands of twisted oxygen-free copper, soft conductor
Insulation: PVC / A
Color: ≥ 0.5 mm black number with white series number
Inner liner: Polyester tape or non-woven for buffer
Shield: Bare Copper braiding
Jacket: PVC/ST5

技术参数:

执行标准：GB/T9330.2
额定电压：450/750V
额定温度：70°C
最小弯曲半径：
移动安装：12X电缆外径
固定安装：6X电缆外径

使用温度范围:
移动安装：-5°C-70°C
固定安装：-30°C-70°C

Technical Parameters:

Implementation of standards : GB/T9330.2
Related Voltage: : 450/750V
Rated temperature : 70°C
Minimum Bending radius: **The working temperature:**
Fixing Installation:12Xouter diameter Fixing Installation: -5°C-70°C
Fixed Installation:6Xouter diameter Fixed Installation: -30°C-70°C

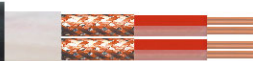
型号规格: Specification:

型号 style	截面积 cross-section	生产芯数 Produced number of cores	绝缘颜色 Insulation color	导体电阻(Ω/KM) Conductor electrical resistance:
KVVRP	0.75mm ²	2-30		26
KVVRP	1.0mm ²	2-26		19.2
KVVRP	1.5mm ²	2-20		13.3
KVVRP	2.5mm ²	2-16	1、颜色区分	7.98
KVVRP	4mm ²	2-14	2、编码区分	4.61
KVVRP	6mm ²	2-12		3.08
KVVRP	10mm ²	2-10		1.83

注明：包装长度及护套颜色均可依客户要求定制。具体参数以产品规格书为准。

Note: Package and Cable Color can be customized according to the customer requirements. Detailed parameter please checks the specification.

SINGI WIRE AND CABLE



应用范围:

该产品适用于电压450/750V及以下或直流1000V及以下的配电装置中，作为电器、仪表、计算机的连接线，也适用于发电、冶金、石化等工矿企业集散系统、自动化系统的信号传输及检测设备用电线。

Application:

This product for voltage 450/750V or DC 1000V and below Distribution equipment, as the electrical instrumentation computer connecting cable ,also applies to power generation, metallurgy petrochemical and other industrial and mining enterprises distribution systems.

产品结构:

导体：无氧铜，单支或多股绞合。
绝缘：PE聚乙烯。
芯线：双绞分组，线对号码带区分，PP带包裹缓冲。
屏蔽：线对裸铜或镀锡铜编织。
成缆：间隙填充，PP带或无纺布总包裹缓冲
护套：PVC聚氯乙烯

Product structure:

Conductor: Oxygen-free copper wire, solid or strands of twisted
Insulation: PE
Cores: Twisted grouping pairs number with distinction, PP belt wrapped buffer
Shield: bare copper or tinned copper braiding
Cabling: Gap-filling, PP belt or non woven total package buffer
Jacket: PVC

技术参数:

执行标准：BS5308-86
额定电压：300/500V
额定温度：70°C
最小弯曲半径：
移动安装：12X电缆外径
固定安装：6X电缆外径

使用温度范围：
移动安装：-10°C-70°C
固定安装：-40°C-70°C

Technical Parameters:

Implementation of standards : BS5308-86
Related Voltage: : 300/500V
Rated temperature : 70°C
Minimum Bending radius: The working temperature:
Fixing Installation:12Xouter diameter Fixing Installation: -10°C-70°C
Fixed Installation:6Xouter diameter Fixed Installation: -40°C-70°C

型号规格: Specification:

型号 style	截面积 cross-section	生产对数 Produced Pairs	绝缘颜色 Insulation color	导体电阻(Ω/KM) Conductor electrical resistance:
DJYVP	0.5mm ²	1-19	线对号码带 区分	39
DJYVP	0.75mm ²	1-19		26
DJYVP	1.0mm ²	1-19		19.2
DJYVP	1.5mm ²	1-19		13.3
DJYVP	2.5mm ²	1-19		7.98

注明：可根据使用场合选择不同铜导体结构电缆，包装长度及护套颜色均可依客户要求定制。具体参数以产品规格书为准。
Note: Select different cable according to applications, package and cable color can be customized according to the customer requirements. Detailed parameter please checks the specification.

SINGI WIRE AND CABLE



应用范围:

该产品适用于电压450/750V及以下或直流1000V及以下的配电装置中，作为电器、仪表、计算机的连接线，也适用于发电、冶金、石化等工矿企业集散系统、自动化系统的信号传输及检测设备用电线。

Application:

This product for voltage 450/750V or DC 1000V and below Distribution equipment, as the electrical instrumentation computer connecting cable ,also applies to power generation, metallurgy petrochemical and other industrial and mining enterprises distribution systems.

产品结构:

导体：无氧铜，单支或多股绞合
绝缘：PE聚乙烯
芯线：双绞分组，线对号码带区分，PP带包裹缓冲，间隙填充成缆
内衬层：PP带或无纺布包裹缓冲
屏蔽：裸铜或镀锡铜丝编织
护套：PVC聚氯乙烯

Product structure:

Conductor: Oxygen-free copper wire, solid or strands of twisted
Insulation: PE
Cores: Twisted grouping pairs number with distinction, PP belt wrapped buffer, Gap-filling
Inner liner: PP tape or non-woven for buffer
Shield: Bare copper or tinned copper braided shield.
Jacket: PVC

技术参数:

执行标准：BS5308-86
额定电压：300/500V
额定温度：70°C
最小弯曲半径：
移动安装：12X电缆外径
固定安装：6X电缆外径

使用温度范围：
移动安装：-10°C-70°C
固定安装：-40°C-70°C

Technical Parameters:

Implementation of standards : BS5308-86
Related Voltage: : 300/500V
Rated temperature : 70°C
Minimum Bending radius: The working temperature:
Fixing Installation:12Xouter diameter Fixing Installation: -10°C-70°C
Fixed Installation:6Xouter diameter Fixed Installation: -40°C-70°C

型号规格: Specification:

型号 style	截面积 cross-section	生产对数 Produced Pairs	绝缘颜色 Insulation color	导体电阻(Ω/KM) Conductor electrical resistance:
DJYVP	0.5mm ²	1-24	线对号码带 区分	39
DJYVP	0.75mm ²	1-24		26
DJYVP	1.0mm ²	1-24		19.2
DJYVP	1.5mm ²	1-24		13.3
DJYVP	2.5mm ²	1-24		7.98

注明：可根据使用场合选择不同铜导体结构电缆，包装长度及护套颜色均可依客户要求定制。具体参数以产品规格书为准。
Note: Select different cable according to applications, package and cable color can be customized according to the customer requirements. Detailed parameter please checks the specification.

SINGI WIRE AND CABLE



应用范围:

该产品适用于电压450/750V及以下或直流1000V及以下的配电装置中，作为电器、仪表、计算机的连接线，也适用于发电、冶金、石化等工矿企业集散系统、自动化系统的信号传输及检测设备用电。

Application:

This product for voltage 450/750V or DC 1000V and below Distribution equipment, as the electrical instrumentation computer connecting cable, also applies to power generation, metallurgy petrochemical and other industrial and mining enterprises distribution systems.

产品结构:

导体：无氧铜，单支或多股绞合。
绝缘：PE聚乙烯。
芯线：双绞分组，线对号码带区分，PP带包裹缓冲。
屏蔽：线对裸铜或镀锡铜编织。
成缆：间隙填充，PP带或无纺布总包裹缓冲。
屏蔽：裸铜或镀锡铜编织总屏蔽。
护套：PVC聚氯乙烯。

Product structure:

Conductor: Oxygen-free copper wire, solid or strands of twisted
Insulation: PE
Cores: Twisted grouping pairs number with distinction, PP belt wrapped buffer
Shield: bare copper or tinned copper braiding
Cabling: Gap-filling, PP belt or non woven total package buffer
Shield: Bare copper or tinned copper braided shield.
Jacket: PVC

技术参数:

执行标准：BS5308-86
额定电压：300/500V
额定温度：70°C
最小弯曲半径：
移动安装：12X电缆外径
固定安装：6X电缆外径

使用温度范围:
移动安装：-10°C-70°C
固定安装：-40°C-70°C

Technical Parameters:

Implementation of standards : BS5308-86
Related Voltage: : 300/500V
Rated temperature : 70°C
Minimum Bending radius:
Fixing Installation:12Xouter diameter
Fixed Installation:6Xouter diameter

The working temperature:
Fixing Installation: -10°C-70°C
Fixed Installation: -40°C-70°C

型号规格: Specification:

型号 style	截面积 cross-section	生产对数 Produced number of cores	绝缘颜色 Insulation color	导体电阻(Ω/KM) Conductor electrical resistance:
DJYPVP	0.5mm ²	1-19		39
DJYPVP	0.75mm ²	1-19		26
DJYPVP	1.0mm ²	1-19	线对号码带	19.2
DJYPVP	1.5mm ²	1-19	区分	13.3
DJYPVP	2.5mm ²	1-19		7.98

注明：可根据使用场合选择不同铜导体结构电缆，包装长度及护套颜色均可依客户要求定制。具体参数以产品规格书为准。
Note: Select different cable according to applications, package and cable color can be customized according to the customer requirements. Detailed parameter please checks the specification.



VV型 铜导体聚氯乙烯绝缘聚氯乙烯护套电力电缆
VV Copper conductor PVC Insulated PVC sheathed Power cable



应用范围:

本产品适用于交流额定电压0.6/1kV的线路中,用于配电网及工业设备装置供电,敷设在室内、隧道、电缆沟及弯道中,电缆不能承受机械外力作用。带有阻燃的电力电缆适用于有要求阻燃的场合。

Application:

This product is suitable for AC rated voltage 0.6/1KV circuit, distribution network and supply equipment for industrial equipment, lying indoors, in tunnel, cable trench and corners, cables can not bear external mechanical forces. Power cables with flame retardant requirements are applicable to the flame retardant occasion.

产品结构:

导体:单根或多根绞合无氧铜。
绝缘:PVC/A型聚氯乙烯。
颜色:颜色区分
内衬层:聚酯带或无纺布包裹缓冲
护套:PVC/ST5型聚氯乙烯。

Product structure:

Conductor: Bare copper or strands of Oxygen-free copper wire
Insulation: PVC/A
Color: different color to distinguish
Liner: polyester tape or non-woven wrap buffer
Sheath: PVC/ST5

技术参数:

执行标准:GB/T12706.1-2008
额定电压:0.6/1Kv
额定温度:70°C
最小弯曲半径:单芯电缆≥20D,多芯电缆≥15D。
使用温度范围:环境温度应不低于0°C,低于0°C时应先预热。

Technical Parameters:

Implementation of standards:GB/T12706.1-2008
Related Voltage:0.6/1Kv
Rated temperature:70°C
Minimum Bending radius: Single core cables ≥ 20D, multi-core cables ≥ 15D
The working temperature: The ambient temperature should not be less than 0 °C, Preheating when lower than 0°C

型号规格: Specification:

型号 STYLE	截面积 cross-section	生产芯数 Produced Cores	绝缘颜色 Insulated Color	导体电阻(Ω/KM) Conductor electrical resistance:
VV	1.5mm ²	1-4		12.1
VV	2.5mm ²	1-5		7.41
VV	4.0mm ²	1-5, 3+1, 3+2, 4+1		4.61
VV	6.0mm ²	1-5, 3+1, 3+2, 4+1	颜色区分	3.08
VV	10mm ²	1-5, 3+1, 3+2, 4+1		1.83
VV	16mm ²	1-5, 3+1, 3+2, 4+1		1.15

注明:VV为聚氯乙烯绝缘,聚氯乙烯护套,ZR为阻燃材质。具体参数以产品规格书为准。

Note: VV is PVC insulated, PVC sheathed, ZR is Retardant material Specific parameters please check specification

YJV型 铜导体交联聚乙烯绝缘聚氯乙烯护套电力电缆
YJV Copper conductor XLPE insulated PVC sheathed Power cable



应用范围:

本产品适用于交流额定电压0.6/1kV的线路中,用于配电网及工业设备装置供电,敷设在室内、隧道、电缆沟及弯道中,电缆不能承受机械外力作用。带有阻燃的电力电缆适用于有要求阻燃的场合。

Application:

This product is suitable for AC rated voltage 0.6/1KV circuit, distribution network and supply equipment for industrial equipment, lying indoors, in tunnel, cable trench and corners, cables can not bear external mechanical forces. Power cables with flame retardant requirements are applicable to the flame retardant occasion.

产品结构:

导体:单根或多根绞合无氧铜。
绝缘:交联聚乙烯。
颜色:颜色区分
内衬层:聚酯带或无纺布包裹缓冲
护套:PVC/ST5型聚氯乙烯。

Product structure:

Conductor: Bare copper or strands of Oxygen-free copper wire
Insulation: XLPE
Color: different color to distinguish
Liner: polyester tape or non-woven for buffer
Sheath: PVC/ST5

技术参数:

执行标准:GB/T12706.1-2008
额定电压:0.6/1Kv
额定温度:90°C
最小弯曲半径:单芯电缆≥20D,多芯电缆≥15D。
使用温度范围:环境温度应不低于0°C,低于0°C时应先预热。

Technical Parameters:

Implementation of standards:GB/T12706.1-2008
Related Voltage:0.6/1Kv
Rated temperature:90°C
Minimum Bending radius: Single core cables ≥ 20D, multi-core cables ≥ 15D
The working temperature: The ambient temperature should not be less than 0 °C, Preheating when lower than 0°C

型号规格: Specification:

型号 STYLE	截面积 cross-section	生产芯数 Produced Cores	绝缘颜色 Insulated Color	导体电阻(Ω/KM) Conductor electrical resistance:
YJV	1.5mm ²	1-4		12.1
YJV	2.5mm ²	1-5		7.41
YJV	4.0mm ²	1-5, 3+1, 3+2, 4+1		4.61
YJV	6.0mm ²	1-5, 3+1, 3+2, 4+1	颜色区分	3.08
YJV	10mm ²	1-5, 3+1, 3+2, 4+1		1.83
YJV	16mm ²	1-5, 3+1, 3+2, 4+1		1.15

注明:YJV为交联聚乙烯绝缘,聚氯乙烯护套,ZR为阻燃材质。具体参数以产品规格书为准。

Note: YJV is XLPE insulated, PVC sheathed, ZR is Retardant material Specific parameters please check specification

BV型 铜导体单芯无护套聚氯乙烯绝缘硬电缆
BV Single Core copper conductor No jacket PVC Insulated Hard Cable



应用范围:

适用于工矿企业动力电源及照明固定布线，也可用于电气控制柜内部固定连线。固定敷设，用于室内明敷，穿管等场所。也适用于交流额定电压450/750V及以下的仪器仪表和电子设备自动装置内部布线用的铜芯聚氯乙烯绝缘安装用电缆。

Application:

This cable is suitable for Power supply for industrial and mining enterprises and lighting fixed wiring, electrical control cabinet, can also be used internally fixed connections. Fixed installation, for indoor dressing for surface, wearing a turbaned other placed.

产品结构:

导体：单支或多根绞合裸铜。
绝缘：PVC聚氯乙烯。
颜色：彩色区分，地线用黄/绿色表示。

Product structure:

Conductor: Solid or Strand twisted bare copper
Insulation: PVC
Color: Color: various color cores with number, Drain wire use green/yellow Distinguish

技术参数:

执行标准：GB/T5023
额定电压：450/750V
额定温度：70°C
最小弯曲半径：
固定安装：6X电缆外径

使用温度范围：
固定安装：-10°C-70°C

Technical Parameters:

Implementation of standards:GB/T5023
Rated voltage: 450/750V
Rated Temperature : 70°C
Minimum Bending radius: The working temperature:
Fixed Installation:6Xouter diameter Fixed Installation: -10°C-70°C

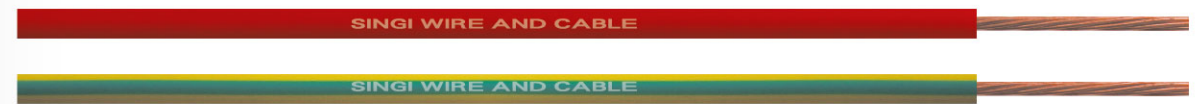
型号规格: Specification:

型号 style	截面积 cross-section	导体结构(mm) conductor structure	绝缘外径(mm) insulation diameter	导体电阻(Ω/KM) Conductor electrical resistance:
BV	1.5mm ²	1/1.38	2.8	12.1
BV	2.5mm ²	1/1.78	3.4	7.41
BV	4mm ²	1/2.25	3.9	4.61
BV	6mm ²	1/2.76	4.8	3.08
BV	10mm ²	7/1.35	6.0	1.83
BV	16mm ²	7/1.7	7.1	1.15
BV	25mm ²	7/2.24	8.6	0.727
BV	35mm ²	7/2.52	10.0	0.524
BV	50mm ²	19/1.78	11.2	0.387

注明：包装长度及电缆颜色均可依客户要求定制。具体参数以产品规格书为准。

Note: Package and Cable Color can be customized according to the customer requirements. Detailed parameter please checks the specification.

BVR型 铜导体单芯无护套聚氯乙烯绝缘软电缆
BVR Copper conduction Single Core No Jacket PVC Insulated Flexible Cable



应用范围:

适用于工矿企业动力电源及照明固定布线，也可用于电气控制柜内部固定连线。固定敷设，用于室内明敷，穿管等需要弯曲柔软的场所。也适用于交流额定电压450/750V及以下的仪器仪表和电子设备自动装置内部布线用的铜芯聚氯乙烯绝缘安装用电缆。

Application:

This cable is suitable for Power supply for industrial and mining enterprises and lighting fixed wiring, electrical control cabinet, can also be used internally fixed connections. Fixed installation, for indoor dressing for surface, wearing a turbaned other placed.

产品结构:

导体：多根绞合裸铜。
绝缘：PVC聚氯乙烯。
颜色：彩色区分，地线用黄/绿色表示。

Product structure:

Conductor: Strands of twisted bare copper
Insulation: PVC
Color: Color: various color cores with number, Drain wire use green/yellow Distinguish

技术参数:

执行标准：JB7834、GB/T5023
额定电压：450/750V
额定温度：70°C
最小弯曲半径：
移动安装：15X电缆外径
固定安装：6X电缆外径

使用温度范围：
移动安装：-10°C-70°C
固定安装：-30°C-70°C

Technical Parameters:

Implementation of standards : JB7834、GB/T5023
Rated voltage:450/750V
Rated Temperature: 70°C
Minimum Bending radius: The working temperature:
Fixing Installation:15Xouter diameter Fixing Installation:-10°C-70°C
Fixed Installation:6Xouter diameter Fixed Installation: -30°C-70°C

型号规格: Specification:

型号 style	截面积 cross-section	导体结构(mm) conductor structure	绝缘外径(mm) insulation diameter	导体电阻(Ω/KM) Conductor electrical resistance:
BVR	1.5mm ²	7/0.52	3.4	12.1
BVR	2.5mm ²	19/0.41	4.1	7.41
BVR	4mm ²	19/0.52	4.8	4.61
BVR	6mm ²	19/0.64	5.3	3.08
BVR	10mm ²	49/0.52	7.3	1.83
BVR	16mm ²	49/0.64	8.6	1.15
BVR	25mm ²	98/0.58	10.2	0.727
BVR	35mm ²	133/0.58	11.7	0.524
BVR	50mm ²	133/0.68	13.9	0.387

注明：包装长度及电缆颜色均可依客户要求定制。具体参数以产品规格书为准。

Note: Package and Cable Color can be customized according to the customer requirements. Detailed parameter please checks the specification.

SINGI WIRE AND CABLE

应用范围:

适用于电器与动力电源及照明固定布线,多用于家装中照明、插座回路,固定敷设,要求机械防护较高和潮湿场合,可以明设暗敷。

Application:

This cable is suitable for Electrical, Power supply and Lighting fixtures and wiring, often use decoration illumination, socket circuits.

产品结构:

导体:单支或多根绞合裸铜
绝缘:PVC聚氯乙烯
颜色:彩色区分(按客户要求)
护套:PVC聚氯乙烯

Product structure:

Conductor: Solid or Strand twisted bare copper
Insulation: PVC
Color: Color: various color cores with number, Drain wire use green/yellow Distinguish
Jacket: PVC

技术参数:

执行标准:GB/T5023
额定电压:300/500V
额定温度:70°C
最小弯曲半径: 使用温度范围:
固定安装:6X电缆外径 固定安装:-10°C-70°C

Technical Parameters:

Implementation of standards: GB/T5023
Rated voltage:300/500V
Rated Temperature: : 70°C
Minimum Bending radius: The working temperature:
Fixed Installation:6Xouter diameter Fixed Installation: -10°C-70°C

型号规格: Specification:

型号 style	截面积 cross-section	生产芯数 Produced number of cores	绝缘颜色 Insulation color	导体电阻(Ω/KM) Conductor electrical resistance:
BVV	1.5mm ²	1-5		12.1
BVV	2.5mm ²	1-5		7.41
BVV	4mm ²	1-5		4.61
BVV	6mm ²	1-5		3.08
BVV	10mm ²	1-5	颜色区分	1.83
BVV	16mm ²	1-5		1.15
BVV	25mm ²	1-4		0.727

注明:芯线颜色、包装长度及护套颜色均可依客户要求定制。具体参数以产品规格书为准。

Note: Cores color, Package and Cable Color can be customized according to the customer requirements. Detailed parameter please checks the specification.

SINGI WIRE AND CABLE

应用范围:

适用于电器与动力电源及照明固定布线,多用于家装中照明、插座回路,固定敷设,要求机械防护较高和潮湿场合,可以明设暗敷。

Application:

This cable is suitable for Electrical, Power supply and Lighting fixtures and wiring, often use decoration illumination, socket circuits.

产品结构:

导体:单支或多根绞合裸铜
绝缘:PVC聚氯乙烯
颜色:彩色区分(按客户要求)
护套:PVC聚氯乙烯

Product structure:

Conductor: Solid or Strand twisted bare copper
Insulation: PVC
Color: multicolor Distinguish
Jacket: PVC

技术参数:

执行标准:JB/T8734
额定电压:300/500V
额定温度:70°C
最小弯曲半径: 使用温度范围:
固定安装:6X电缆外径 固定安装:-10°C-70°C

Technical Parameters:

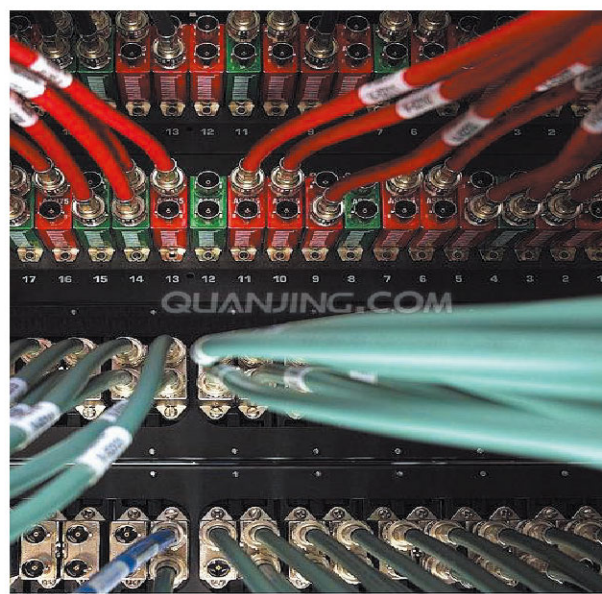
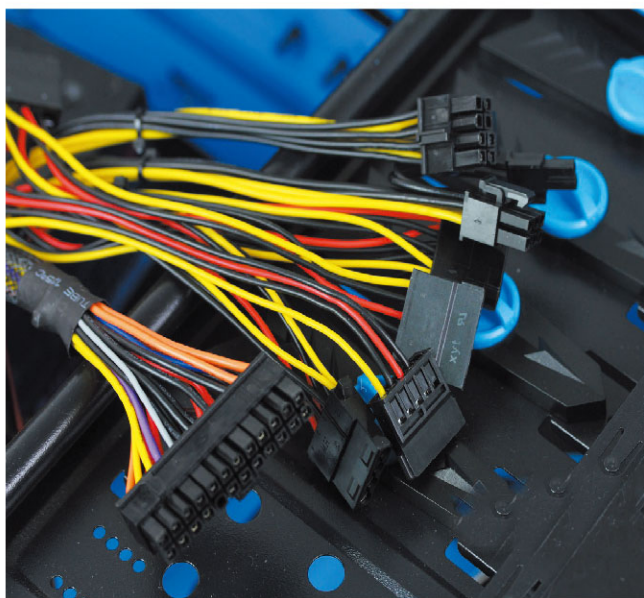
Implementation of standards:JB/T8734
Rated voltage: 300/500V
Rated Temperature: 70°C
Minimum Bending radius: The working temperature:
Fixed Installation:6Xouter diameter Fixed Installation: -10°C-70°C

型号规格: Specification:

型号 style	截面积 cross-section	生产芯数 Produced number of cores	绝缘颜色 Insulation color	导体电阻(Ω/KM) Conductor electrical resistance:
BVVB	0.75mm ²	2、3		24.5
BVVB	1.0mm ²	2、3		18.1
BVVB	1.5mm ²	2、3		12.1
BVVB	2.5mm ²	2、3		7.41
BVVB	4mm ²	2、3	颜色区分	4.61
BVVB	6mm ²	2、3		3.08
BVVB	10mm ²	2、3		1.83

注明:芯线颜色、包装长度及护套颜色均可依客户要求定制。具体参数以产品规格书为准。

Note: Cores color, Package and Cable Color can be customized according to the customer requirements. Detailed parameter please checks the specification.



SINGI WIRE AND CABLE



应用范围:

双绝缘, 电子束交联电子电缆, 用于光伏发电, 随太阳能光伏系统应用于通信、电力、气象、广播电视、航道坐标指示灯、铁路、光伏电站等领域的电源连接。也可用于昼夜温差大的沙漠和有益雾潮湿的沿海以及高原辐射强的地区。

Application:

Double insulation, electron-beam cross-linked cables for photovoltaic power follow solar, photovoltaic systems used in communications, power, weather, broadcast television, channel coordinate indicator, railways, photovoltaic power plants and other fields. Can also be used for day and night temperature of desert and coastal salt spray and wet plateau region radiation strong station

产品结构:

导体: 多股绞合镀锡铜丝。
绝缘: 电子束交联聚烯烃
护套: 电子束交联聚烯烃
颜色: 黑/蓝、蓝/黑、黑/红、红/黑等, 也可根据客户要求。

Product structure:

Conductor: strands of twisted tinned copper wire
Insulation: Polyolefin copolymer electron-beam cross-linked
Out sheath: Polyolefin copolymer electron-beam cross-linked
Color: Black/Blue, Blue/Black, Black/Red, Red/Black, or your need

技术参数:

执行标准: UNE 211 23; UNE 20.460-5-52, UTE C 32-502
认证: TUV 2PFG 1169/08.2007 PV1-F
额定电压: 600/1000V 交流, 1000/1800V 直流
最小弯曲半径: 使用温度范围:
移动安装: 4X 电缆外径 温度等级: -45°C-125°C
固定安装: 5X 电缆外径 温度环境: -40°C-90°C

Technical Parameters:

Implementation of standards :
UNE 211 23 ; UNE 20.460-5-52 , UTE C 32-502
Certification: : TUV 2PFG 1169/08.2007 PV1-F
Rated voltage: 600 / 1000V AC, 1000 / 1800V DC
Minimum Bending radius: The working temperature:
Fixing Installation:4Xouter diameter Fixing Installation:-45°C-125°C
Fixed Installation:5Xouter diameter Fixed Installation:-40°C-90°C

型号规格: Specification:

截面积 cross-section	导体结构(mm) conductor structure	外径(mm) diameter	导体电阻(Ω/KM) Resistance Max.	载流量(A) Current Carrying Capacity
1.5mm ²	30/0.25	4.9	13.3	30
2.5mm ²	50/0.25	5.45	7.98	41
4.0mm ²	56/0.3	6.1	4.75	55
6.0mm ²	84/0.3	7.2	3.39	70
10mm ²	142/0.3	9.0	1.95	98
16mm ²	228/0.3	10.2	1.24	132
25mm ²	361/0.3	12.0	0.795	176
35mm ²	525/0.3	13.8	0.565	218
50mm ²	720/0.3	14.8	0.393	280

注明: 包装长度及绝缘、护套颜色均可依客户要求定制。具体参数以产品规格书为准。

Note: Package and Insulation, Cable Color can be customized according to the customer requirements.
Detailed parameter please checks the specification.

SINGI WIRE AND CABLE

应用范围:

双绝缘，电子束交联电子电缆，用于光伏发电，随太阳能光伏系统应用于通信、电力、气象、广播电视、航道坐标指示灯、铁路、光伏电站等领域的电源连接。也可用于昼夜温差大的沙漠和有益雾潮湿的沿海以及高原辐射强的地区。

产品结构:

导体：多股绞合镀锡铜丝
绝缘：电子束交联聚烯烃
护套：电子束交联聚烯烃
颜色：黑色

技术参数:

执行标准：UNE 211 23；UNE 20.460-5-52，UTE C 32-502
认证：TUV 2PFG 1169/08.2007 PV1-F
额定电压：600/1000V交流，1000/1800V直流
最小弯曲半径：使用温度范围：
移动安装：4X电缆外径 温度等级：-40°C-125°C
固定安装：5X电缆外径 温度环境：-40°C-90°C

型号规格：Specification:

截面积 cross-section	导体结构(mm) conductor structure	护套外径(mm) diameter	导体电阻(Ω/KM) Resistance Max.	载流量(A) Current Carrying Capacity
2*1.5mm ²	30/0.25	8.3	13.3	30
2*2.5mm ²	50/0.25	9.2	7.98	41
2*4.0mm ²	56/0.3	12.0	4.75	55
2*6.0mm ²	84/0.3	13.5	3.39	70
2*10mm ²	142/0.3	17.6	1.95	98
2*16mm ²	228/0.3	19.8	1.24	132

注明：包装长度及绝缘、护套颜色均可依客户要求定制。具体参数以产品规格书为准。

Note: Package and Insulation, Cable Color can be customized according to the customer requirements. Detailed parameter please checks the specification.

SINGI WIRE AND CABLE

应用范围:

适用于家用电器、照明灯具、电子设备、仪器仪表等部连接。

产品结构:

导体：单根或多股绞合镀锡铜。
绝缘：PVC聚氯乙烯
颜色：任意色，地线用黄/绿色表示。

技术参数:

执行标准：UL758；UL1581及CSA C22.2 NO.210.05
额定电压：300V
额定温度：80°C
燃烧测试：通过UL VW-1垂直水平耐燃测试。

型号规格：Specification:

型号 style	线号(AWG)	导体结构(mm) conductor structure	绝缘直径(mm) insulation diameter	导体电阻(Ω/KM) Conductor electrical resistance:
1007	30	7/0.102	1.1	381
1007	28	7/0.127	1.2	239
1007	26	7/0.16	1.3	150
1007	24	11/0.16	1.4	94.2
1007	22	17/0.16	1.6	59.4
1007	20	26/0.16	1.8	36.7
1007	18	41/0.16	2.0	23.2
1007	16	26/0.254	2.3	14.6

注明：包装长度及电缆颜色均可依客户要求定制。具体参数以产品规格书为准。

Note: Package and Cable Color can be customized according to the customer requirements. Detailed parameter please checks the specification.



应用范围:

适用于家用电器、照明灯具、电子设备、仪器仪表等部连接。

Application:

For household appliances, lighting, electronic equipment, instruments and other internal connections.

产品结构:

导体：单根或多股绞合镀锡铜。
绝缘：PVC聚氯乙烯
颜色：任意色，地线用黄/绿色表示。

Product structure:

Conductor: Solid or Strands of twisted tinned copper
Insulation: PVC
Color: Any color drain wire presented by yellow / green.

技术参数:

执行标准：UL758；UL1581及CSA C22.2 NO.210.05
额定电压：600V
额定温度：105°C
燃烧测试：通过UL VW-1垂直水平耐燃测试。

Technical Parameters:

Implementation of standards: UL758；UL1581 and
CSA C22.2 NO.210.05
Rated voltage: 600V
Rated temperature: 105°C
Fire retardant: By UL VW-1&CSA FT1 vertical flame test

型号规格: Specification:

型号 style	线号(AWG)	导体结构(mm) conductor structure	绝缘直径(mm) insulation diameter	导体电阻(Ω/KM) Conductor electrical resistance:
1015	26	7/0.16	2.05	150
1015	24	11/0.16	2.2	94.2
1015	22	17/0.16	2.35	59.4
1015	20	26/0.16	2.55	36.7
1015	18	16/0.254	2.8	23.2
1015	16	26/0.254	3.05	14.6
1015	14	41/0.254	3.45	8.96
1015	12	65/0.254	3.95	5.64
1015	10	65/0.32	4.6	3.54

注明：包装长度及电缆颜色均可依客户要求定制。具体参数以产品规格书为准。

Note: Package and Cable Color can be customized according to the customer requirements.
Detailed parameter please checks the specification.



应用范围:

适用于电子设备的机内和机外配线，作为测量、监测和控制电缆
适合用在机床制造、成套设备安装工程、电站、暖气和空调系统、冷冻设备、办公自动化设备以及数据处理系统等场合。

Application:

Available for electronic equipment inside and outside the wiring, also be used as measuring, monitoring and control cables used in combination machine manufacturing, Equipment installation, power plants, heating and air conditioning systems, refrigeration equipment, office automation equipment and data processing systems and other occasions.

产品结构:

导体：多股精绞无氧铜丝或镀锡铜丝。
绝缘：特殊硬质耐热阻燃PVC。
颜色：符合UL758
护套：混合80度耐热阻燃PVC，通过VW-1阻燃试验。

Product structure:

Conductor: strands of oxygen-free copper or tinned copper
Insulation: Special PVC
Color: Comply with UL758
Jacket: Mixed 80°C heat retardant PVC, by VW-1 flame test.

技术参数:

执行标准：UL758
额定电压：300V
最小弯曲半径：
移动安装：15X电缆外径
固定安装：4X电缆外径

使用温度范围：
移动安装：-10°C-80°C
固定安装：-40°C-80°C

Technical Parameters:

Implementation of standards：UL758
Rated voltage：300V
Minimum Bending radius: The working temperature:
Fixing Installation:15Xouter diameter Fixing Installation: -10°C-80°C
Fixed Installation:4Xouter diameter Fixed Installation: -40°C-80°C

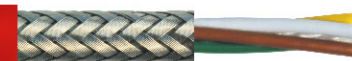
型号规格: Specification:

型号 style	线号(AWG)	生产芯数 Produced number of cores	绝缘颜色 Insulation color	导体电阻(Ω/KM) Conductor electrical resistance:
2464	28	2-38		239
2464	26	2-38		150
2464	24	2-38	按UL758标准	94.2
2464	22	2-38		59.4
2464	20	2-32		36.7
2464	18	2-28		23.2

注明：包装长度及电缆颜色均可依客户要求定制。具体参数以产品规格书为准。

Note: Package and Cable Color can be customized according to the customer requirements.
Detailed parameter please checks the specification.

SINGI WIRE AND CABLE



应用范围:

适用于电子设备的机内和机外配线，作为测量、监测和控制电缆适合用在机床制造、成套设备安装工程、电站、暖气和空调系统、冷冻设备、办公自动化设备以及数据处理系统等场合。采用了铝箔麦拉加铜网编织双层屏蔽，有效抵抗电磁波干扰。

Application:

Available for electronic equipment inside and outside the wiring, also be used as measuring, monitoring and control cables used in combination machine manufacturing, Equipment installation, power plants, heating and air conditioning systems, refrigeration equipment, office automation equipment and data processing systems and other occasions.

产品结构:

导体：多股精绞无氧铜丝或镀锡铜丝。
绝缘：特殊硬质耐热阻燃PVC。
颜色：符合UL758
排流线：与导体同规格（可选）。
屏蔽：铝箔麦拉+裸铜丝或镀锡铜丝编织。
护套：混合80度耐热阻燃PVC，通过VW-1阻燃试验。

Product structure:

Conductor: strands of oxygen-free copper or tinned copper
Insulation: Special PVC
Color: Comply with UL758
Drain wire As conductor specification (optical)
Shield: Aluminum Foil Mylar Foil+ bare copper or tinned copper braiding
Jacket: Mixed 80°C heat retardant PVC, by VW-1 flame test.

技术参数:

执行标准：UL758
额定电压：300V
最小弯曲半径： 使用温度范围：
移动安装：15X电缆外径 移动安装：-10°C-80°C
固定安装：4X电缆外径 固定安装：-40°C-80°C

Technical Parameters:

Implementation of standards : UL758
Rated voltage : 300V
Minimum Bending radius: The working temperature:
Fixing Installation:15Xouter diameter Fixing Installation:-10°C-80°C
Fixed Installation:4Xouter diameter Fixed Installation:-40°C-80°C

型号规格: Specification:

型号 style	线号(AWG)	生产芯数 Produced number of cores	绝缘颜色 Insulation color	导体电阻(Ω/KM) Conductor electrical resistance:
2464	28	2-38	按UL758标准	239
2464	26	2-38		150
2464	24	2-36		94.2
2464	22	2-32		59.4
2464	20	2-28		36.7
2464	18	2-26		23.2

注明：包装长度及电缆颜色均可依客户要求定制。具体参数以产品规格书为准。

Note: Package and Cable Color can be customized according to the customer requirements.
Detailed parameter please checks the specification.

SINGI WIRE AND CABLE



应用范围:

作为测量、监测和控制电缆适合用在机床制造、成套设备安装工程、电站、暖气和空调系统、冷冻设备、办公自动化设备以及数据处理系统等场合。采用了铝箔麦拉加铜网编织双层屏蔽，有效抵抗电磁波干扰，双绞节距短，抗串音特性优秀，适用于高速信号回线的配置。

Application:

As a measuring, monitoring and control cable suitable for the places of machine tool manufacturing, equipment installation, power plants, heating and air conditioning systems, refrigeration systems, office automation equipment, and data processing system.

产品结构:

导体：多股精绞无氧铜丝或镀锡铜丝。
绝缘：特殊硬质PVC。
芯线：双绞分组后成缆，符合UL758
排流线：与导体同规格（可选）。
屏蔽：铝箔麦拉+裸铜丝或镀锡铜丝编织。
护套：混合80度耐油PVC，通过VW-1阻燃试验。

Product structure:

Conductor: strands of oxygen-free copper or tinned copper
Insulation: Special hard PVC
Core: Comply with UL758
Drain wire: As conductor specification (optical)
Shield: Aluminum Foil Mylar Foil+ bare copper or tinned copper braiding
Jacket: Mixed 80°C heat retardant PVC, by VW-1 flame test.

技术参数:

执行标准：UL758
额定电压：300V
最小弯曲半径： 使用温度范围：
移动安装：15X电缆外径 移动安装：-10°C-80°C
固定安装：4X电缆外径 固定安装：-40°C-80°C

Technical Parameters:

Implementation of standards : UL758
Rated voltage : 300V
Minimum Bending radius: The working temperature:
Fixing Installation:15Xouter diameter Fixing Installation:-10°C-80°C
Fixed Installation:4Xouter diameter Fixed Installation:-40°C-80°C

型号规格: Specification:

型号 style	线号(AWG)	生产芯数 Produced number of cores	绝缘颜色 Insulation color	导体电阻(Ω/KM) Conductor electrical resistance:
2464	28	1-36	按UL758标准	239
2464	26	1-36		150
2464	24	1-32		94.2
2464	22	1-28		59.4
2464	20	1-24		36.7
2464	18	1-20		23.2

注明：包装长度及电缆颜色均可依客户要求定制。具体参数以产品规格书为准。

Note: Package and Cable Color can be customized according to the customer requirements.
Detailed parameter please checks the specification.



SINGI Wire&cable

【工程案例】

多年来，SINGI信基，凭借卓越的品质信誉和质量在竞争激烈的市场中开疆拓土，业绩斐然，产品销售网络覆盖国内各大中城市，并远销海外。

Over the years, SINGI, Relying on excellent quality reputation and quality of speakers in the competitive market, outstanding achievement, product sales network covering domestic large and medium-sized cities, and exported to overseas.

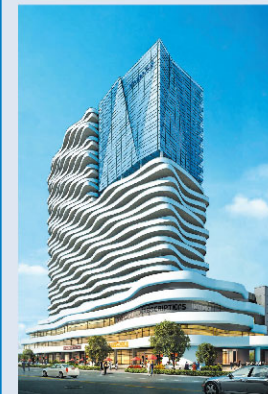
SINGI

Projects Examples

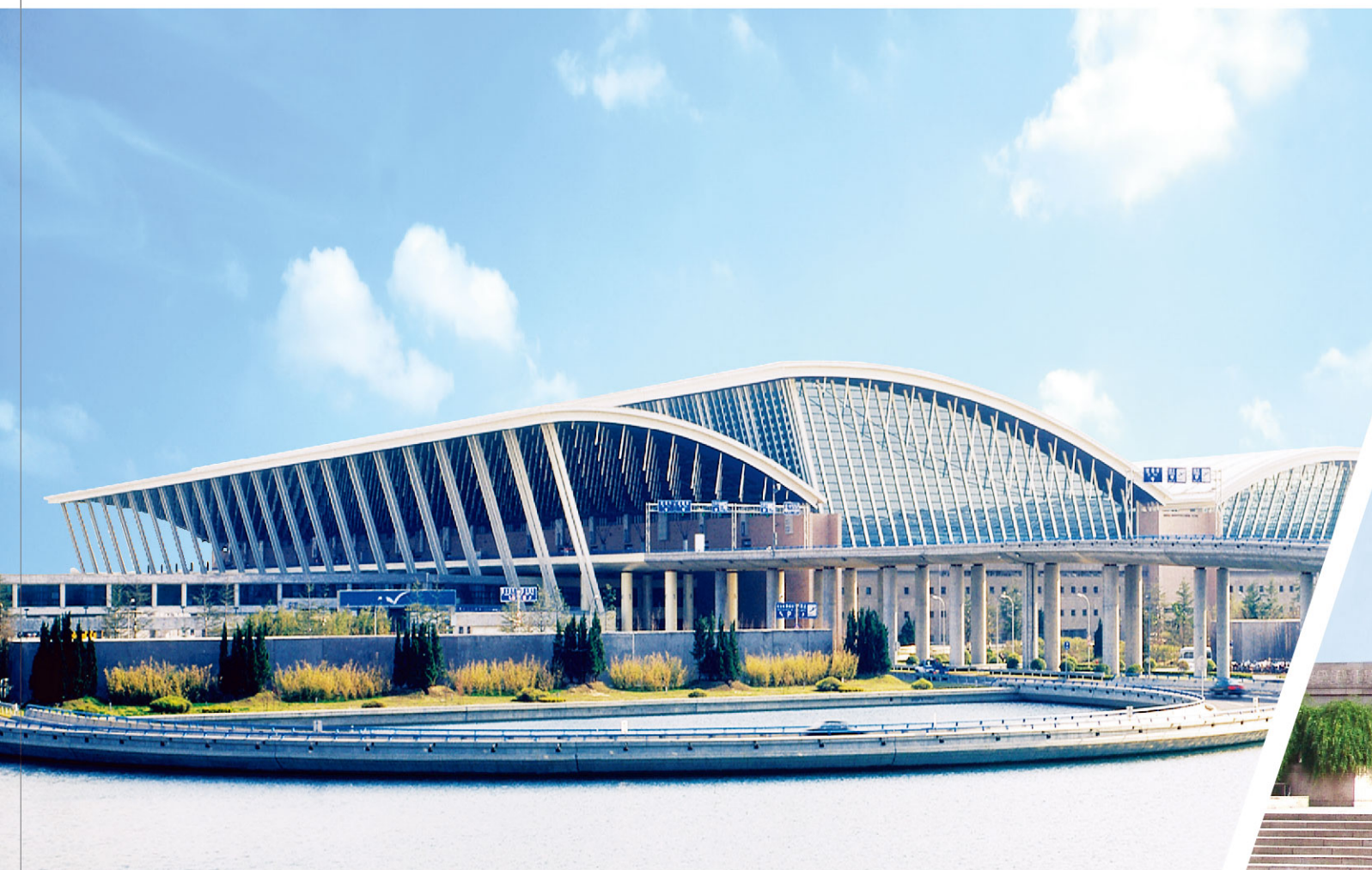
信基经典项目 →

部分重点工程

Part of key projects



CE认证 UL认证 3C认证 足量足米 PC阻燃 环保材质



工程名称：上海浦东国际机场
Project Name : Shanghai Pudong International Airport



工程名称：宁波世贸中心
Project Name : Ningbo World Trade Center



工程名称：武汉纽宾凯国际酒店
Project Name : Wuhan new bing kay
International Hotel



工程名称：上海博物馆新馆
Project Name : Shanghai Museum



工程名称：上海证大家园
Project Name : Shanghai Zheng da Jiayuan



工程名称：重庆凤天竹园
Project Name : Chong Qing Feng Tian Zhu Yuan



工程名称：南昌大学
Project Name : Nanchang University



工程名称：烟台南山世纪城
Project Name : Yantai nanshan Century city



工程名称：广东名门大厦
Project Name : Guangdong ancestry Mansion



工程名称：广东豪门大厦
Project Name : Guangdong Royal Family Mansion

工程名称：上海新国际展览中心
Project Name : Shanghai New International EXPO Centre



SINGI®
信基线缆·电线电缆制造专家

以诚信奠定基础/让创新传递价值

客户热线 Customer Hotline:
400-820-5961

▼
工程名称：上海世博会中国国家馆
Project Name : Shanghai World Expo China Pavilion

